

**(ENGINEER'S)
SUBMITTAL DATA**

MODEL WLF-DA15: 6" DEEP FIXED HURRICANE LOUVER

MIAMI-DADE, FLORIDA, NOA NO. 15-0218.08

EXPIRATION DATE: JUNE 30, 2020

APPROVAL DATE: JUNE 25, 2015

MAXIMUM DESIGN PRESSURE RATING

 SINGLE UNIT: +/- 140.0 PSF
 MULTIPLE UNIT: +/- 140.0 PSF

PRODUCT APPROVAL IS IN ACCORDANCE WITH THE FLORIDA BUILDING CODE AS OF 6/10/2010. DESIGN WIND LOADS SHALL BE DETERMINED AS PER SECTIONS 1619 AND 1620 OF 2007 FLORIDA BUILDING CODE AND ALSO SHALL BE IN ACCORDANCE WITH ASCE-7.

APPLICATIONS

THE MODEL WLF-DA15 IS A STATIONARY LOUVER DESIGNED TO PROTECT EITHER EXHAUST OR INTAKE OPENINGS IN A BUILDINGS EXTERIOR WALLS. THIS LOUVER HAS BEEN REVIEWED BY THE MIAMI-DADE COUNTY FLORIDA PRODUCT CONTROL DIVISION AND ACCEPTED BY THE BOARD OF RULES AND APPEALS (BORA) TO BE USED IN HIGH VELOCITY HURRICANE ZONES (HVHZ) AS WELL AS OTHER REGIONS AS LONG AS THEY DO NOT EXCEED THE +/- 140 PSF RATING. THE LOUVER HAS ALSO BEEN TESTED TO PROVIDE LARGE MISSLE IMPACT RESISTANCE AND IS CONSTRUCTED OF ALUMINUM TO RESIST OXIDATION.

STANDARD CONSTRUCTION
FRAME:
 6063T5 EXTRUDED ALUMINUM
 NOMINAL WALL THICKNESS OF 0.081"
 UNIVERSAL 1.5" FLANGE WITH A 4" DEEP FRAME
 CAULKING SURFACE PROVIDED

BLADES:
 6063T5 EXTRUDED ALUMINUM
 NOMINAL WALL THICKNESS OF 0.081"
 BLADES ARE POSITIONED AT 45 DEG. ANGLE
 SPACED AT APPROX. 4" CENTERS

BIRD SCREEN:
 3/4" X .051" EXPANDED ALUMINUM BIRD SCREEN
 REMOVABLE FRAME
 REAR (INSIDE) MOUNTING POSITION

FINISH:
 MILL ALUMINUM (STANDARD)
 SKY WHITE POWDER COAT (100% POLYESTER)
 AVAILABLE FOR ADDITIONAL FEE

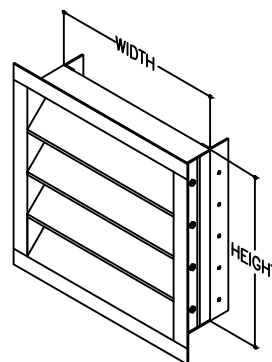
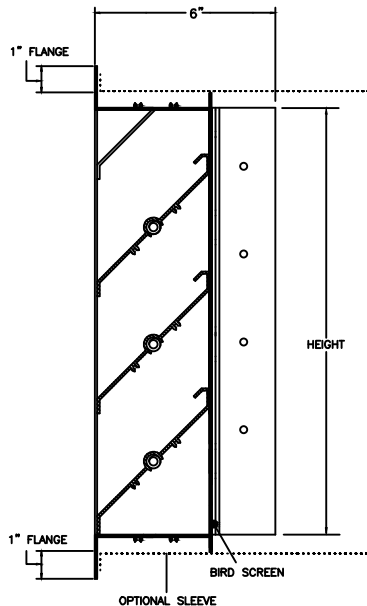
MINIMUM SIZE:**
 10"W X 10"H

MAXIMUM SIZE:**
 •60"W X 96"H SINGLE SECTION
 •60"W X 192"H TWO SINGLE SECTION STACKED WITH A HORIZONTAL MULLION
 •LARGER SIZES CAN BE MADE USING UP TO THREE 60"W X 96"H SECTIONS WITH VERTICLE MULLIONS

APPROXIMATE SHIPPING WEIGHT:
 10 LBS/SQ. FT. (49 KG/SQ. M.)

OPTIONS: (AT ADDITIONAL COST)
 INSECT SCREEN
 SKY WHITE POWDER COAT BY DUPONT (100% POLYESTER)
 11" DEEP X .125 ALUMINUM SLEEVE

INSTALLATION:
 MUST COMPLY WITH INSTRUCTIONS TO MEET MIAMI-DADE PRODUCT STANDARDS.

****NOTE:** ACTUAL WIDTH AND HEIGHT DIMENSIONS ARE APPROXIMATELY 1/4" LESS THAN LISTED TO ALLOW FOR CLEARANCE

FEATURES

HEAVY EXTRUDED ALUMINUM PROVIDES SUPERIOR PROTECTION FROM LARGE, WIND-BOURNE MISSILE IMPACT.

ONE VERTICLE CENTER REINFORCEMENT ADDED AFTER 30"W TO PROVIDE ADDITIONAL SUPPORT.

LOUVER DESIGNED FOR LOCATIONS THAT DRAIN WATER WHICH HAS PENETRATED THE ROOM. THE ROOM SHOULD HOUSE WATER RESITANT OR WATER PROOF EQUIPMENT, COMPONENTS AND/OR SUPPLIES.

FLANGED FACE ALLOWS FOR INSTALLATION IN ANY WALL THICKNESS, AND ANY MATERIAL SUBSTRATE.

2" EXTENDED JAM WITH PREDRILLED HOLES TO ALLOW MULTIPLE ANCHORAGE LOCATIONS.

MAXIMUM SINGLE UNIT DIMENSIONS ARE 60"W X 96"H. FOR LARGER OPENINGS, LOUVERS CAN BE COMBINED USING OUR APPROVED ALUMINUM MULLIONS.

PERFORMANCE RATINGS BASED ON TESTING IN ACCORDANCE WITH FLORIDA BUILDING CODES TAS 201, 202, AND 203.

JOB NAME:
LOCATION:
ARCHITECT:
ENGINEER:
CONTRACTOR:
CONTACT GRILLE TECH INC. FOR ADDITIONAL INFORMATION OR WITH SPECIAL REQUIREMENTS.
5101 NW 36TH AVE MIAMI, FL 33142 PHONE: 305-537-0053 FAX: 305-577-0064
WEB: WWW.GRILLETECHINC.COM EMAIL: SALES@GRILLETECHINC.COM

WLF-DA15

 ALUMINUM WALL LOUVER SYSTEM
 ENGINEER'S SUBMITTAL DATA

DRAWN BY: CG	DATE: 06/30/10	SCALE: NOT TO SCALE	DRAWING NO. WLF-DA15
CHECKED BY: IV	DATE: 06/29/15	REVISION: 03	



DEPARTMENT OF REGULATORY AND ECONOMIC RESOURCES (RER)
BOARD AND CODE ADMINISTRATION DIVISION
NOTICE OF ACCEPTANCE (NOA)

MIAMI-DADE COUNTY
PRODUCT CONTROL SECTION
11805 SW 26 Street, Room 208
Miami, Florida 33175-2474
T (786) 315-2590 F (786) 315-2599
www.miamidade.gov/economy

Grille Tech, Inc.
5101 NW 36 Avenue
Miami, FL 33142

SCOPE:

This NOA is being issued under the applicable rules and regulations governing the use of construction materials. The documentation submitted has been reviewed and accepted by Miami-Dade County RER-Product Control Section to be used in Miami Dade County and other areas where allowed by the Authority Having Jurisdiction (AHJ).

This NOA shall not be valid after the expiration date stated below. The Miami-Dade County Product Control Section (In Miami Dade County) and/or the AHJ (in areas other than Miami Dade County) reserve the right to have this product or material tested for quality assurance purposes. If this product or material fails to perform in the accepted manner, the manufacturer will incur the expense of such testing and the AHJ may immediately revoke, modify, or suspend the use of such product or material within their jurisdiction. RER reserves the right to revoke this acceptance, if it is determined by Miami-Dade County Product Control Section that this product or material fails to meet the requirements of the applicable building code.

This product is approved as described herein, and has been designed to comply with the Florida Building Code, including the High Velocity Hurricane Zone.

DESCRIPTION: Model WLF-DA15 Aluminum Louver

APPROVAL DOCUMENT: Drawing No. **0551-0402-10**, titled "WLF-DA15 Aluminum Wall Louver", sheets 1 through 6 of 6, dated 04/30/09, with revision 1 dated 02/10/2015, prepared by Wolters Engineering, Inc, signed and sealed by Scott Wolters, P.E., bearing the Miami-Dade County Product Control revision stamp with the Notice of Acceptance number and expiration date by the Miami-Dade County Product Control Section.

MISSILE IMPACT RATING: Large and Small Missile Impact Resistant

LABELING: Each unit shall bear a permanent label with the manufacturer's name or logo, city, state, and the following statement: "Miami-Dade County Product Control Approved", unless otherwise noted herein.

RENEWAL of this NOA shall be considered after a renewal application has been filed and there has been no change in the applicable building code negatively affecting the performance of this product.

TERMINATION of this NOA will occur after the expiration date or if there has been a revision or change in the materials, use, and/or manufacture of the product or process. Misuse of this NOA as an endorsement of any product, for sales, advertising or any other purposes shall automatically terminate this NOA. Failure to comply with any section of this NOA shall be cause for termination and removal of NOA.

ADVERTISEMENT: The NOA number preceded by the words Miami-Dade County, Florida, and followed by the expiration date may be displayed in advertising literature. If any portion of the NOA is displayed, then it shall be done in its entirety.

INSPECTION: A copy of this entire NOA shall be provided to the user by the manufacturer or its distributors and shall be available for inspection at the job site at the request of the Building Official. This NOA **renews and revises** NOA # **10-0518.05** and consists of this page 1 and evidence page E-1, as well as approval document mentioned above.

The submitted documentation was reviewed by **Carlos M. Utrera, P.E.**



Handwritten signature and date: 06/16/2015

NOA No. 15-0218.08
Expiration Date: June 30, 2020
Approval Date: June 25, 2015
Page 1

NOTICE OF ACCEPTANCE: EVIDENCE SUBMITTED

A. DRAWINGS

1. Drawing No. **0551-0402-10**, titled "WLF-DA15 Aluminum Wall Louver", sheets 1 through 6 of 6, dated 04/30/09, with revision 1 dated 02/10/2015, prepared Wolters Engineering, Inc, signed and sealed by Scott Wolters, P.E.

B. TESTS "*Submitted under NOA # 10-0518.05*"

1. Test reports on 1) Uniform Static Air Pressure Test, Loading per FBC TAS 202-94
2) Large Missile Impact Test per FBC, TAS 201-94
3) Cyclic Wind Pressure Loading per FBC, TAS 203-94
along with marked-up drawings and installation diagram of WLF-DA15 Aluminum Louver Systems", prepared by Hurricane Test Laboratory, Inc., Report No. **0551-0204-10**, dated 04/30/2010, signed and sealed by Vinu J. Abraham, P.E.

C. CALCULATIONS "*Submitted under NOA # 10-0518.05*"

1. Anchor verification calculations and structural analysis prepared by Wolters Engineering, Inc, dated 05/12/2010, signed and sealed by Scott Wolters, P.E.

D. QUALITY ASSURANCE

1. Miami-Dade Department of Regulatory and Economic Resources (RER)

E. MATERIAL CERTIFICATIONS

1. None.

F. STATEMENTS

1. Statement letter of code conformance with 2010 and 5th edition (2014) FBC issued by Wolters Engineering, Inc, dated 05/20/2015, signed and sealed by Scott Wolters, P.E.

"Submitted under NOA # 10-0518.05"

2. No financial interest letter issued by Wolters Engineering, Inc, dated 10/13/2009, signed and sealed by Scott Wolters, P.E.
3. Code compliance letter issued by Hurricane Test Laboratory, Inc., dated 04/29/2010, signed and sealed by Vinu J. Abraham, P.E.



Carlos M. Utrera, P.E.

Product Control Examiner

NOA No. 15-0218.08

Expiration Date: June 30, 2020

Approval Date: June 25, 2015

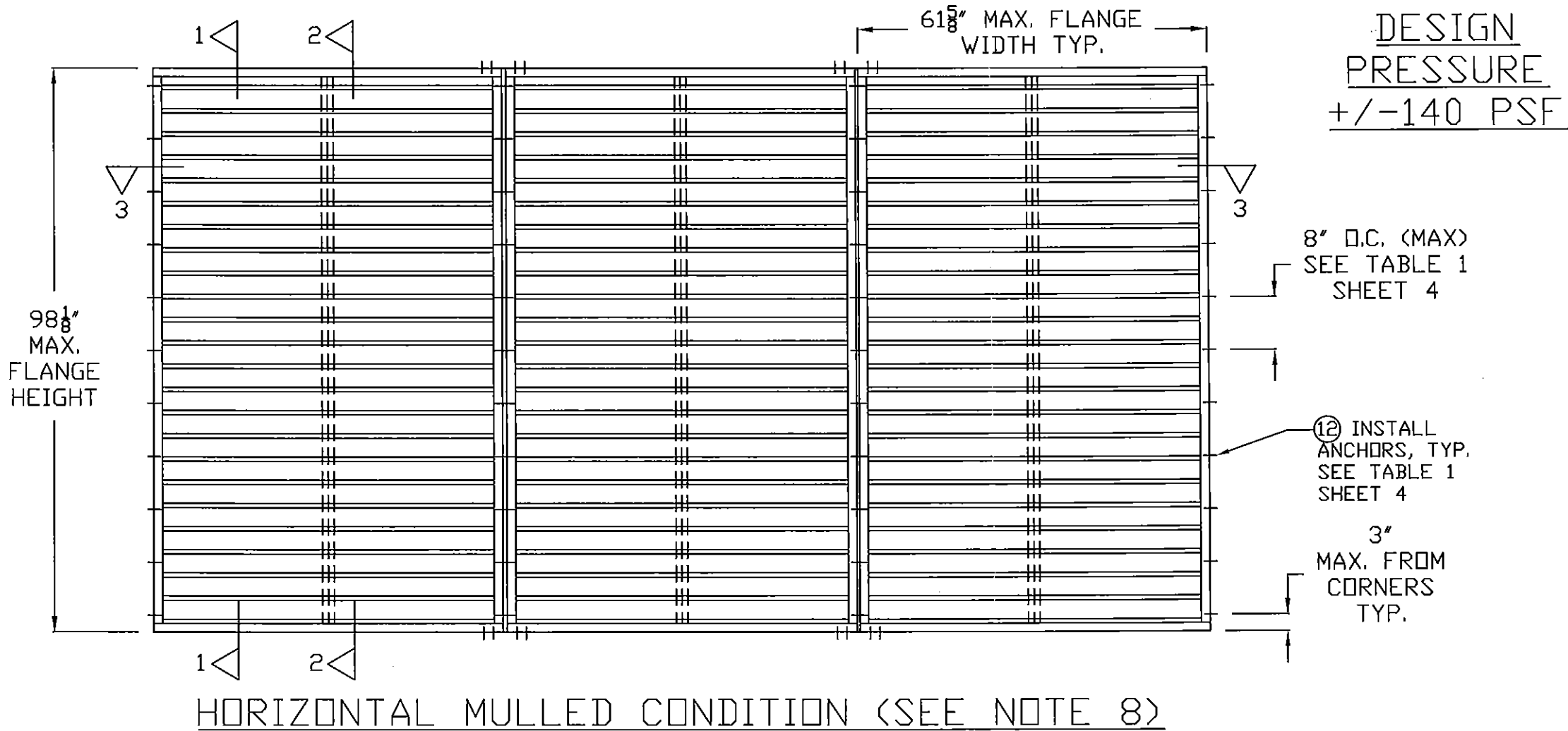
GENERAL NOTES

1. THIS ALUMINUM WALL LOUVER PRODUCT IS LARGE MISSILE IMPACT RESISTANT AND DOES NOT REQUIRE THE USE OF SHUTTERS.
- △ 2. THIS LOUVER SYSTEM HAS BEEN TESTED TO TAS 201-94, TAS 202-94 (LOADS ONLY), AND TAS 203-94 (REF. HTL TEST REPORT 0551-0204-10) AND MEETS THE REQUIREMENTS OF THE FLORIDA BUILDING CODE, 5TH EDITION (2014).
3. THIS LOUVER PRODUCT IS NOT TESTED FOR WATER INFILTRATION RESISTANCE. THESE LOUVERS ARE TO BE INSTALLED IN A LOCATION WHERE THE ROOM BEHIND THE LOUVER IS DESIGNED TO DRAIN WATER PENETRATING INTO THE ROOM, AND THE ROOM WILL HOUSE WATER RESISTANT / WATER PROOF EQUIPMENT, COMPONENTS, OR SUPPLIES.
4. THE STRUCTURAL ADEQUACY AND SUITABILITY OF THE WOOD BUCKS OR OTHER SUBSTRATES TO WHICH THE LOUVER SYSTEM IS TO BE INSTALLED SHALL BE VERIFIED BY A LICENSED ENGINEER OR REGISTERED ARCHITECT OR AS APPROVED BY THE AUTHORITY HAVING JURISDICTION.
5. AN ALLOWABLE STRESS INCREASE HAS NOT BEEN USED IN THE ANCHOR ANALYSIS FOR THIS SYSTEM.
- △ 6. WHERE DISSIMILAR MATERIALS OF ANY TYPE (LOUVER SYSTEM, ANCHORAGE, OR SUBSTRATE) COME IN CONTACT, THE MATERIALS MUST BE PROPERLY COATED OR OTHERWISE PROTECTED AS REQUIRED BY FBC AND ADM-1-2010 TO PREVENT GALVANIC REACTIONS. SPECIAL CARE SHALL BE TAKEN TO PROTECT ALUMINUM LOUVERS FROM PRESSURE TREATED LUMBER, AND ALL FASTENERS SHALL BE SELECTED WITH PROPER COATING OR MATERIAL TYPES TO PREVENT REACTIONS WITH LOUVERS OR SUBSTRATES.
7. MINIMUM LOUVER SIZE IS 10" X 10"
8. LOUVERS MAY BE USED IN SINGLE UNIT CONFIGURATION, DOUBLE WIDE OR TRIPLE WIDE MULLED, OR DOUBLE HIGH MULLED CONFIG.
9. THE MAXIMUM DESIGN PRESSURE OF THIS LOUVER SYSTEM IS + / - 140.0 P.S.F.

INDEX	
SHEET	DESCRIPTION
1	NOTES, 3-WIDE ELEV.
2	SECTIONS, DETAILS
3	SECTIONS, DETAILS
4	DETAILS, ANCHOR TABLE
5	TWO-HIGH DETAILS, BOM
6	EXTRUSION PROFILES

REV.	DATE	DESCRIPTION
0	4/30/2009	ORIGINAL RELEASE
1	2/10/2015	CODE UPDATE - BLADE REVISION

WLF-DA15 Aluminum Wall Louver
Large Missile Impact Resistant



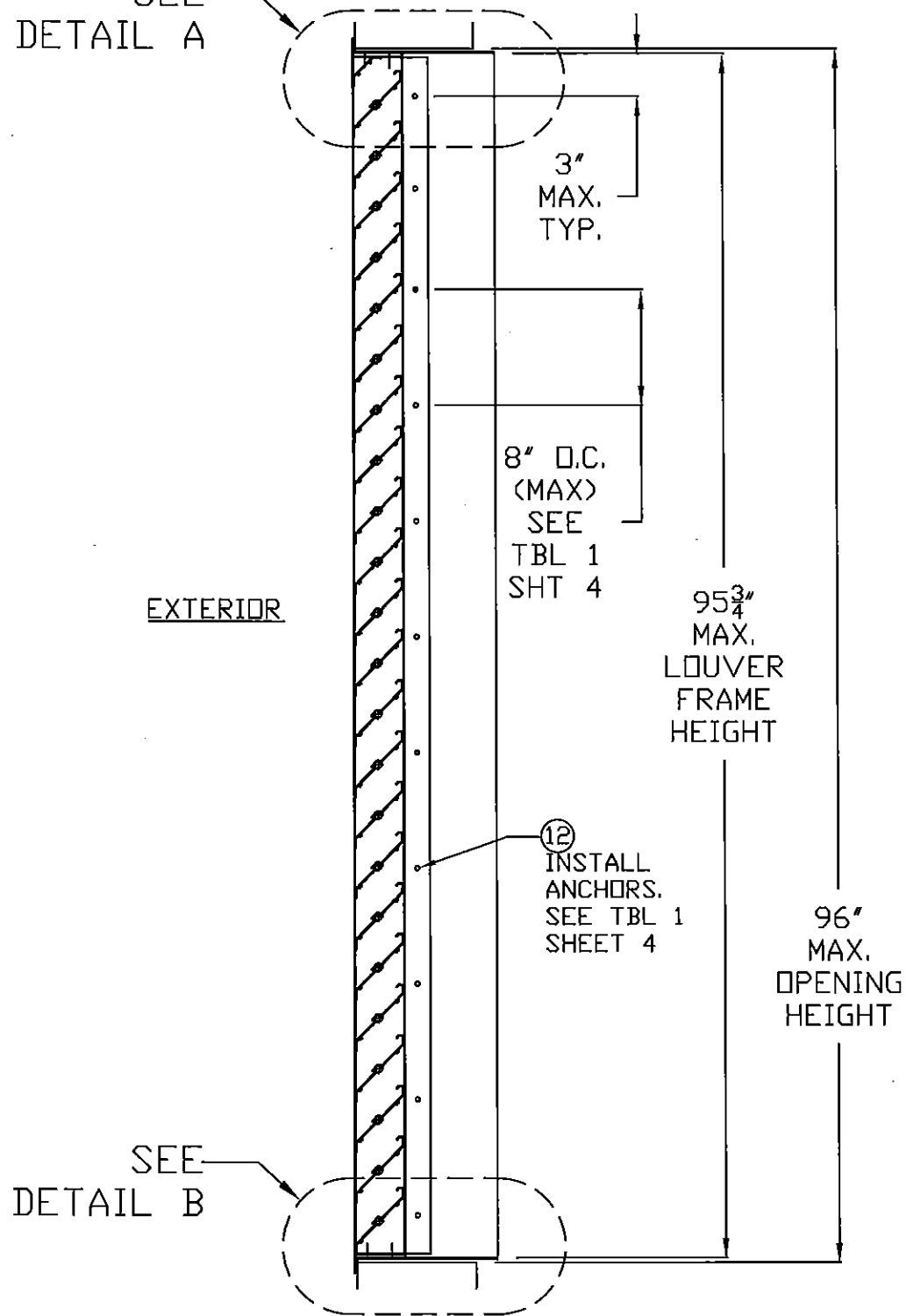
PRODUCT REVISED
 as complying with the Florida Building Code
 Acceptance No. 15-0210-08
 Expiration Date 06/30/2020
 By *[Signature]*
 Miami Trade Product Control

[Signature]
SCOTT WOLTERS
 FLPE# 62354
WOLTERS ENGINEERING, INC.
 (COA# 27194)
 15211 97TH ROAD N
 WEST PALM BEACH, FL 33412
 MAY 19 2015

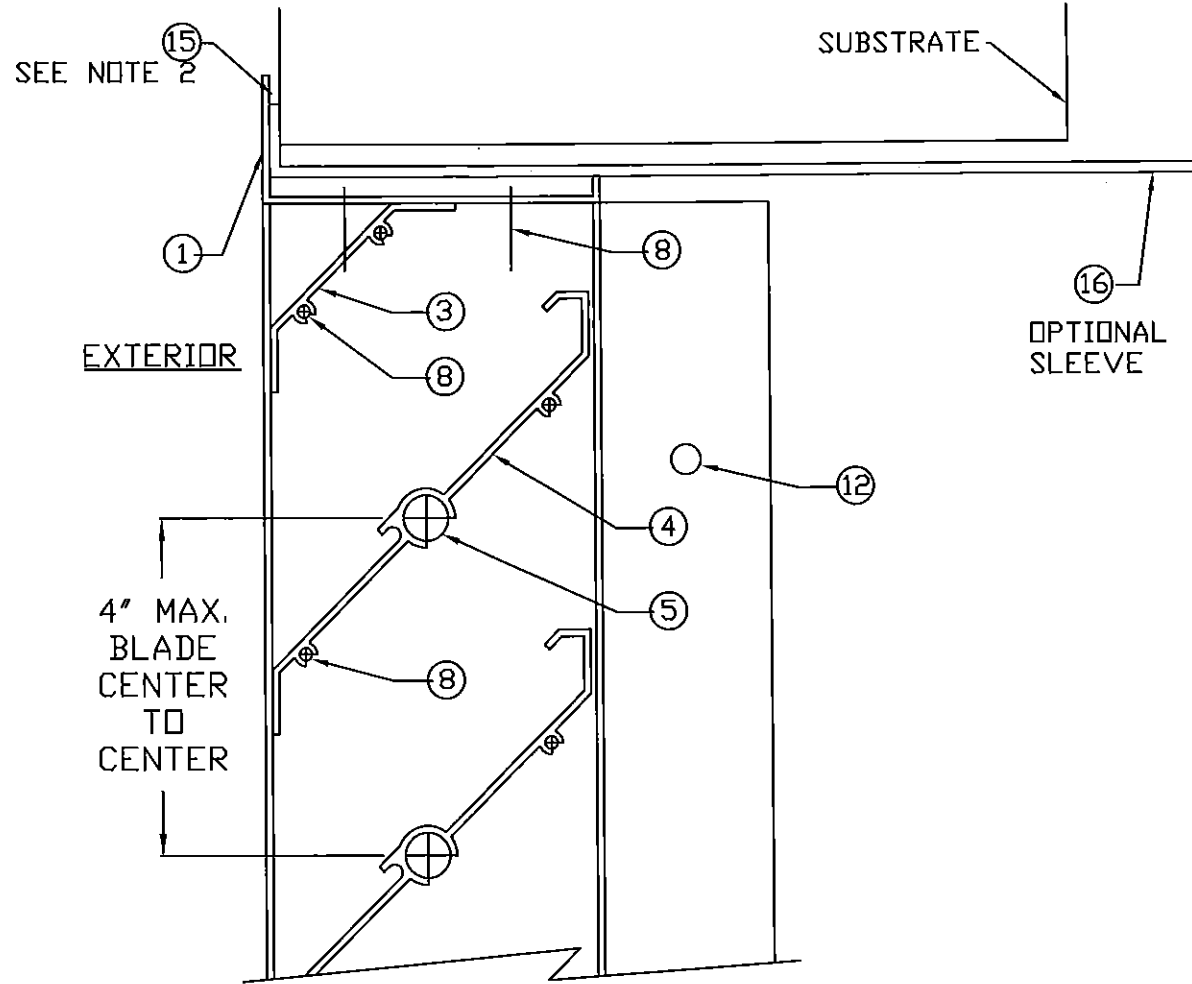
Grille Tech, Inc.
 5101 NW 36th AVE
 MIAMI, FL 33142
 PHONE: 305.537.0053
 FAX: 305.537.0064

DRAWING # 0551-0402-10
 SCALE: NTS
 SHEET 1 of 6

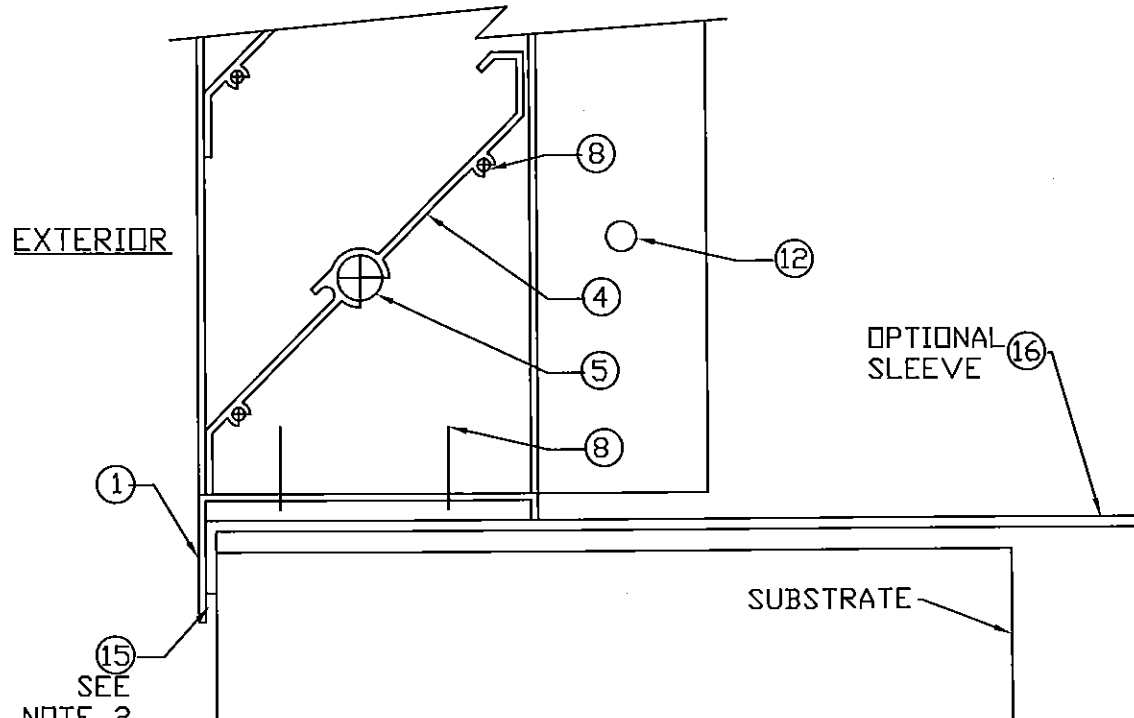
SEE
DETAIL A



SECTION 1-1



DETAIL A. HEAD



DETAIL B. SILL

NOTES

1. NO INSTALL. ANCHORS THROUGH LOUVER FRAME HEAD OR SILL.
2. FULL COVERAGE DOW 795 SILICONE BETWEEN SLEEVE FRONT FLANGE TO SUBSTRATE, AND LOUVER FRONT FLANGE TO SUBSTRATE AND/OR SLEEVE FLANGE

PRODUCT REVISED
to comply with the Florida
Building Code
Acceptance No. 15-0210.08
Expiration Date 06/30/2020
By: *[Signature]*
Miami Code Product Control

[Signature]
SCOTT WOLTERS
FLPE# 62354
WOLTERS ENGINEERING, INC.
(COA# 27194)
15211 97TH ROAD N
WEST PALM BEACH, FL 33412
MAY 19 2015

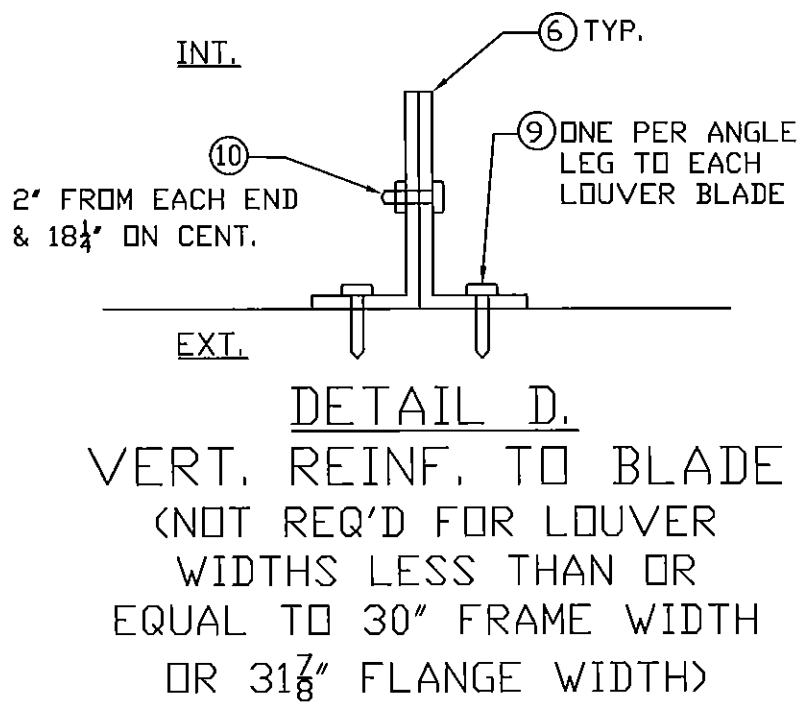
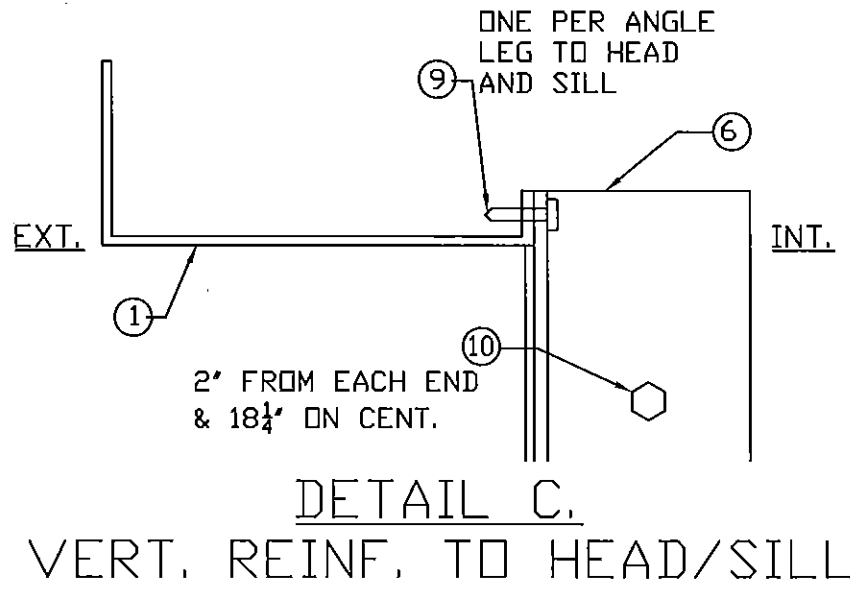
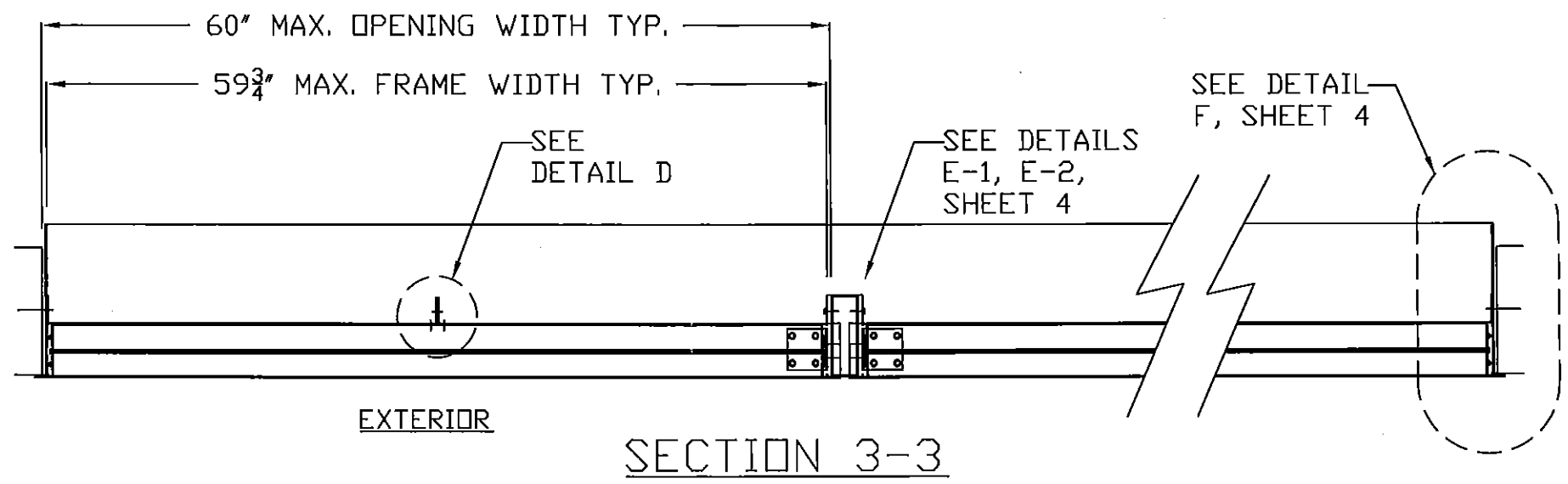
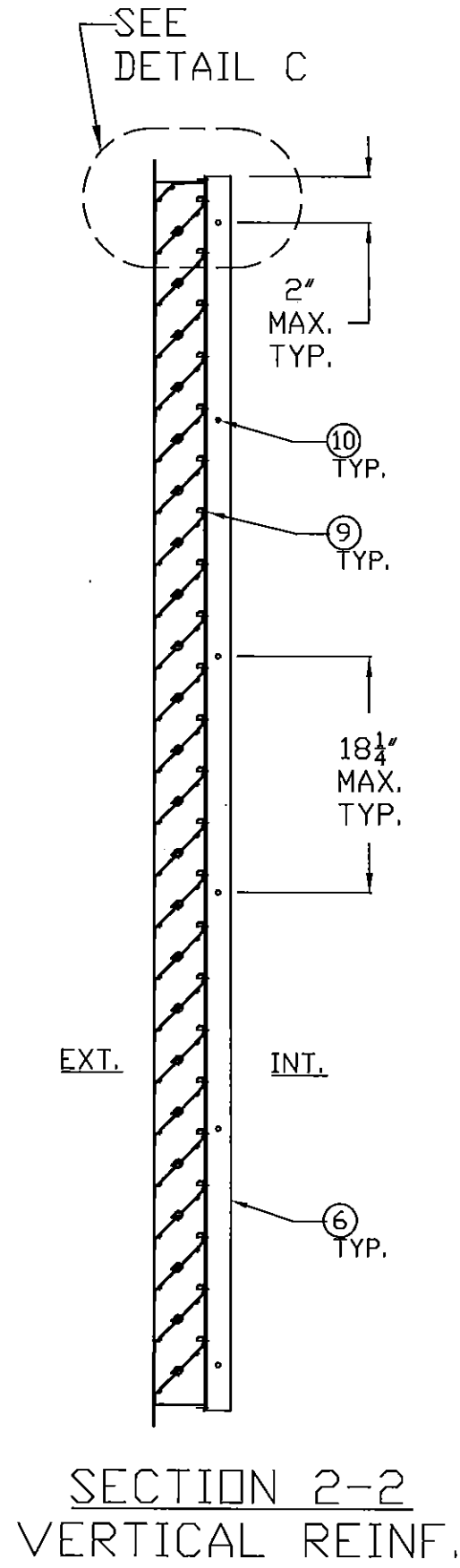
REV.	DATE	DESCRIPTION
0	4/30/2009	ORIGINAL RELEASE
1	2/10/2015	CODE UPDATE - BLADE REVISION

WLF-DA15 Aluminum Wall Louver
Large Missile Impact Resistant

Grille Tech, Inc.
5101 NW 36th AVE
MIAMI, FL 33142
PHONE: 305.537.0053
FAX: 305.537.0064

DRAWING #
0551-0402-10

SCALE: NTS
SHEET
2 of 6



PRODUCT REVISED
 as complying with the Florida
 Building Code
 Acceptance No 15-0210.08
 Expiration Date 06/30/2020
 By *[Signature]*
 Miami Dade Product Control

[Signature]
 SCOTT WOLTERS
 FLPE# 62354
 WOLTERS ENGINEERING, INC.
 (COA# 27194)
 15211 97TH ROAD N
 WEST PALM BEACH, FL 33412
 MAY 19 2015

REV.	DATE	DESCRIPTION	BY
0	4/30/2009	ORIGINAL RELEASE	LAT
1	2/10/2015	CODE UPDATE - BLADE REVISION	SV

WLF-DA15 Aluminum Wall Louver
 Large Missile Impact Resistant

Grille Tech, Inc.
 5101 NW 36th AVE
 MIAMI, FL 33142
 PHONE: 305.537.0053
 FAX: 305.537.0064

DRAWING # 0551-0402-10
 SCALE: NTS
 SHEET 3 of 6

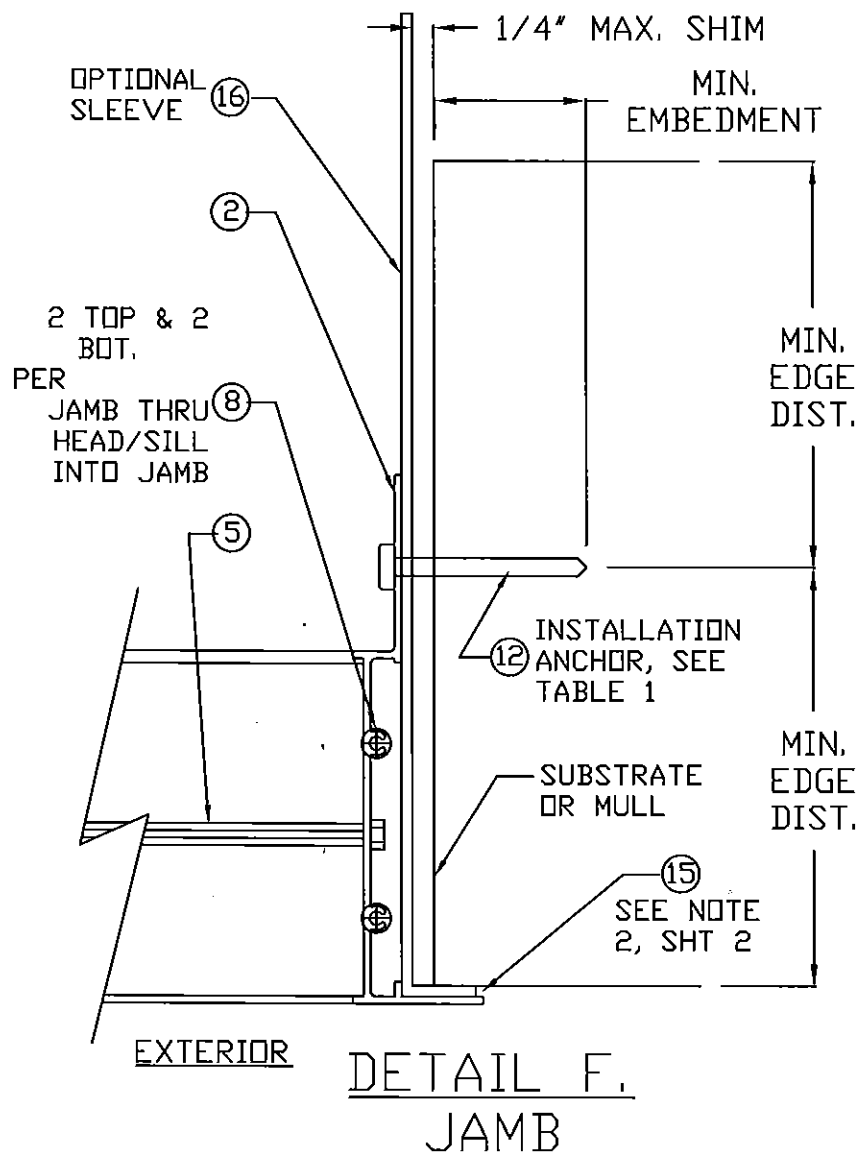
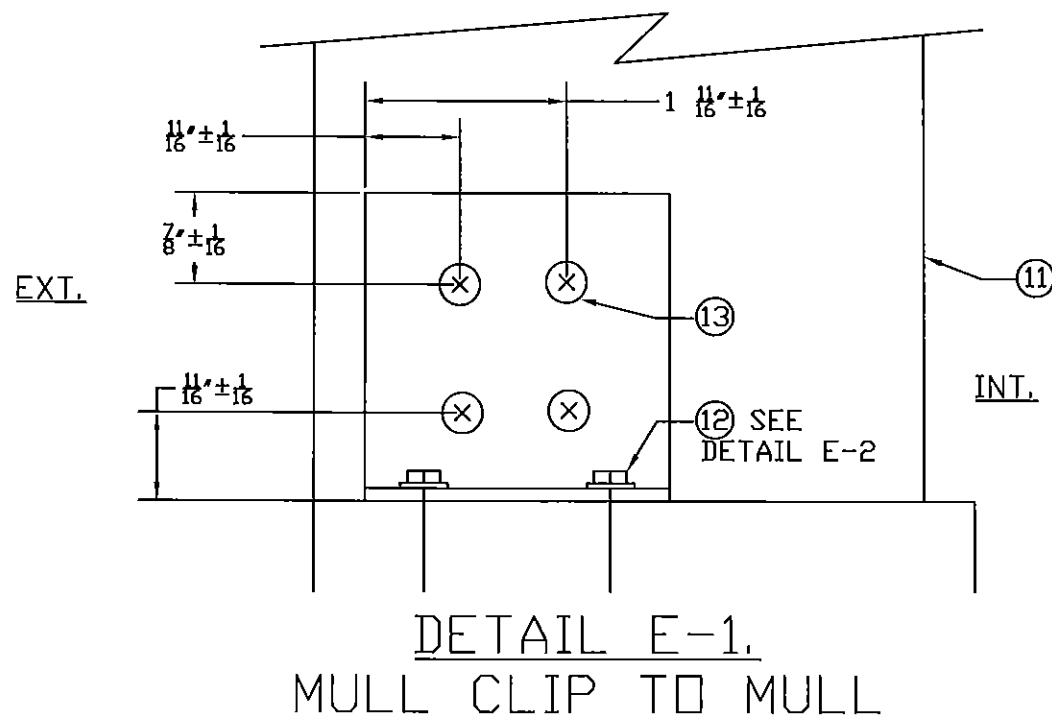


TABLE 1. QUALIFIED INSTALLATION ANCHOR INFORMATION

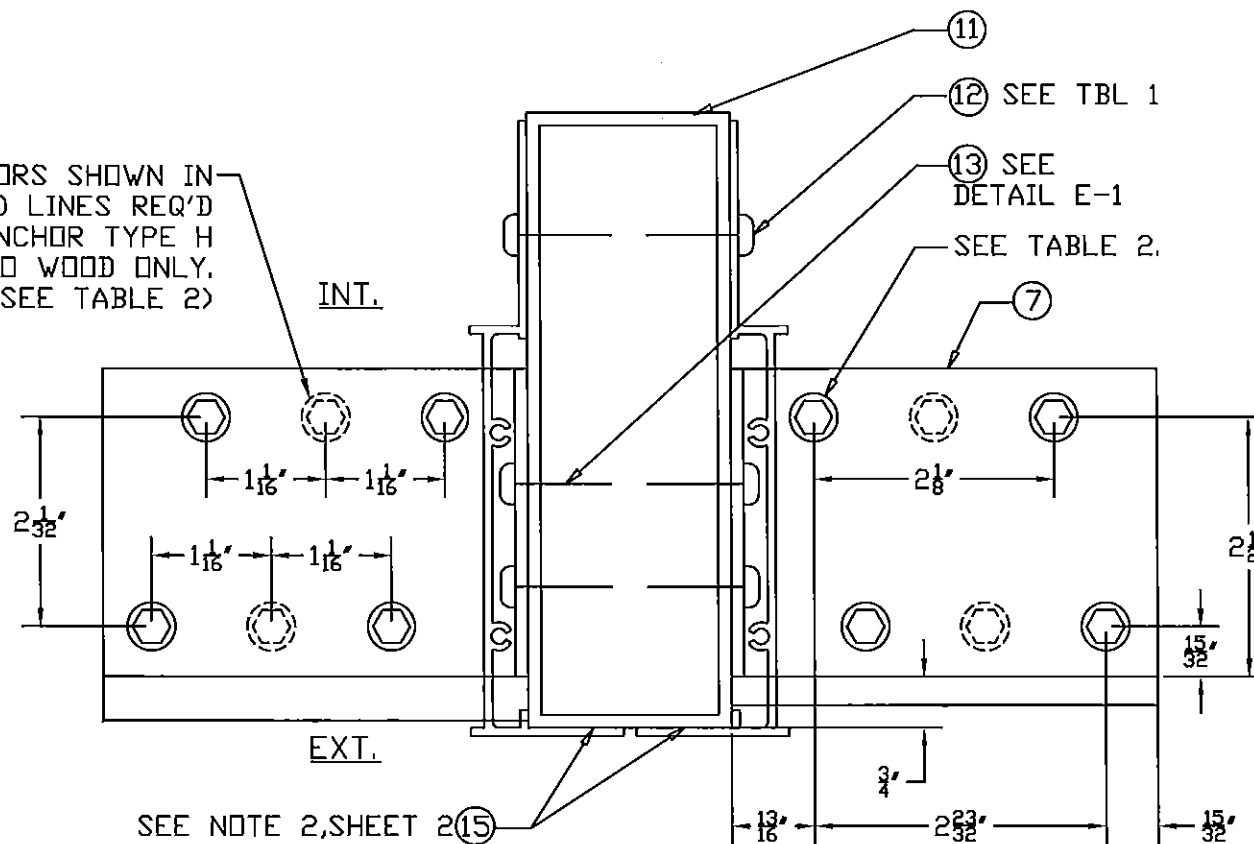
ID	ANCHOR	SUBSTRATE	MIN. EMBED.	MIN. EDGE DISTANCE
A	1/4" ITW TAPCON	CONCRETE (3.2 KSI MIN)	1"	2 1/2"
B	1/4" ITW TAPCON	GROUT FILLED CMU	1 1/4"	2 1/2"
C	1/4" ITW TAPCON	WOOD (G=0.42 MIN)	1 3/8"	1"
D	#12 WOOD SCREW GRADE 5	WOOD (G=0.42 MIN)	1 3/8"	1"
E	#12 TEK SMS GRADE 5	1/8" ALUM. 6063-T5 MIN.	-	1/2"
F	#12 TEK SMS GRADE 5	1/8" STEEL 36 KSI MIN.	-	1/2"

TABLE 2. QUALIFIED MULLION CLIP ANCHOR INFORMATION

ID	ANCHOR	SUBSTRATE	MIN. EMBED.	MIN. EDGE DISTANCE	QTY PER CLIP
96" MAX LENGTH VERTICAL MULLION, 61 5/8" MAX LOUVER FLANGE WIDTHS					
G	5/16" ITW TAPCON	CONCRETE (2.9 KSI MIN)	2 1/4"	2 1/2"	4
H	#14 WOOD SCREW GRADE 5	WOOD (G=0.42 MIN)	2 1/2"	2 1/2"	6
I	#12 TEK SMS GRADE 5	1/8" STEEL 36 KSI MIN.	-	1"	4
60" MAX LENGTH HORIZONTAL MULLION, 98 1/8" MAX LOUVER FLANGE HEIGHTS					
A	1/4" ITW TAPCON	CONCRETE (3.2 KSI MIN)	1"	2 1/2"	4
D	#12 WOOD SCREW GRADE 5	WOOD (G=0.42 MIN)	1 3/8"	1"	4
F	#12 TEK SMS GRADE 5	1/8" STEEL 36 KSI MIN.	-	1/2"	4



ANCHORS SHOWN IN DASHED LINES REQ'D FOR ANCHOR TYPE H INTO WOOD ONLY. (SEE TABLE 2)



PRODUCT REVISED to comply with the Florida Building Code Acceptance No 15-0218.08 Expiration Date 06/30/2020
By *[Signature]*
Miami Desk Product Control

[Signature]
SCOTT WOLTERS
FLPE# 62354
WOLTERS ENGINEERING, INC.
(COA# 27194)
15211 97TH ROAD N
WEST PALM BEACH, FL 33412
MAY 19 2015

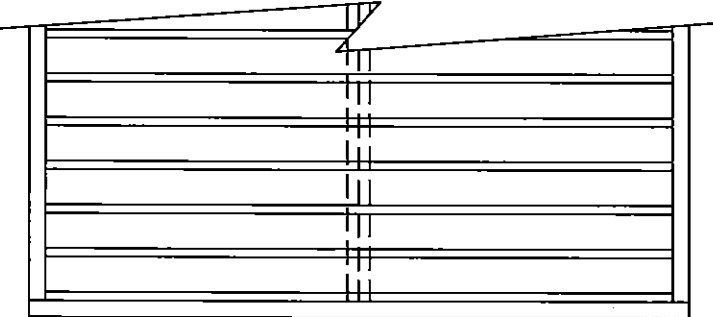
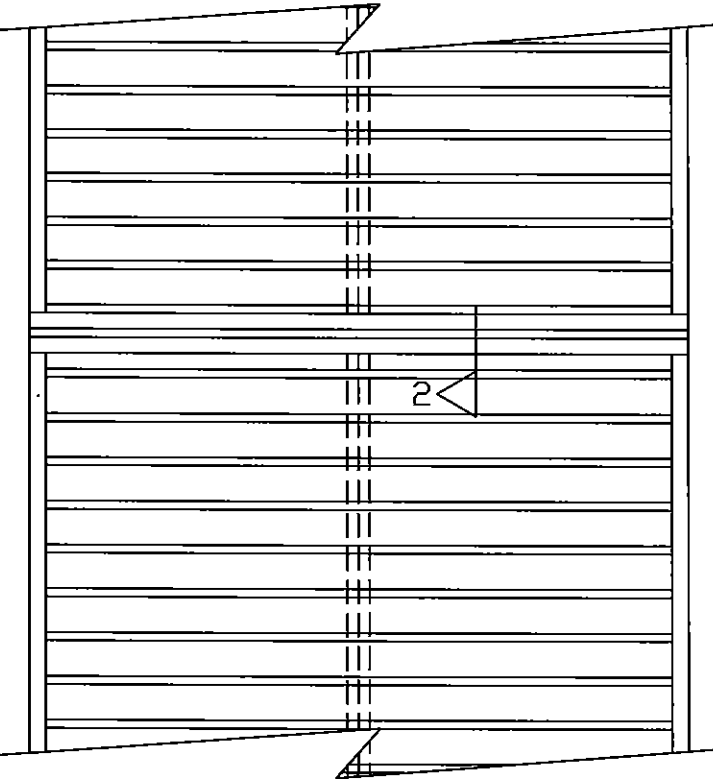
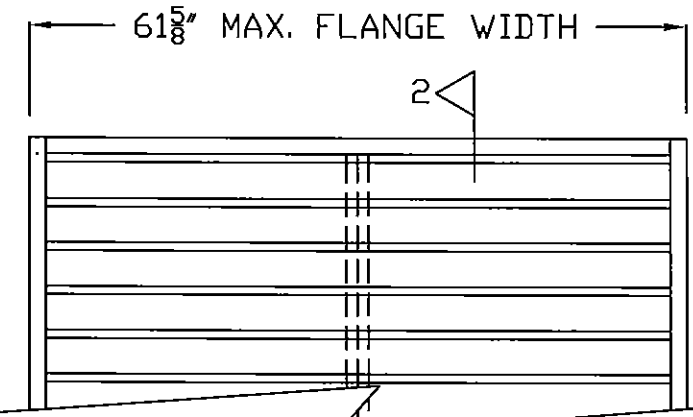
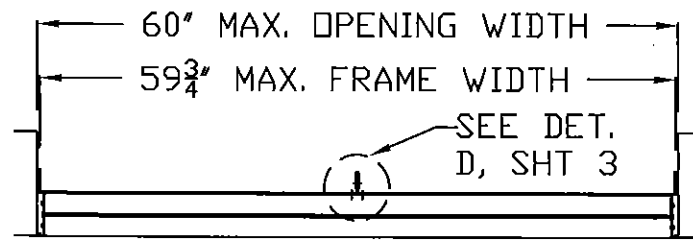
REV.	DATE	DESCRIPTION	BY	LAT	SV
1	2/10/2015	CODE UPDATE - BLADE REVISION			
0	4/30/2009	ORIGINAL RELEASE			

WLF-DA15 Aluminum Wall Louver
Large Missile Impact Resistant

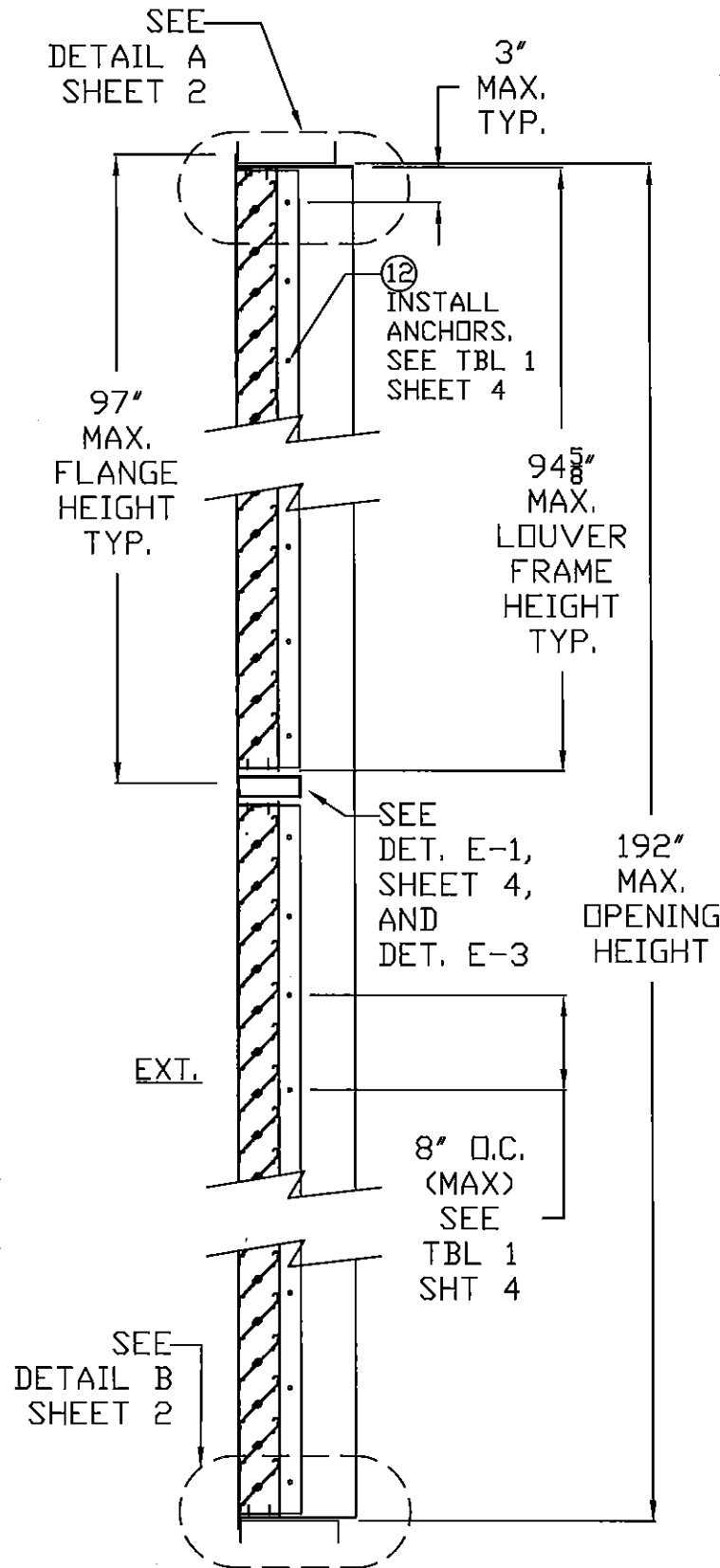
Grille Tech, Inc.
5101 NW 36th AVE
MIAMI, FL 33142
PHONE: 305.537.0053
FAX: 305.537.0064

DRAWING # 0551-0402-10
SCALE: NTS

SHEET 4 of 6

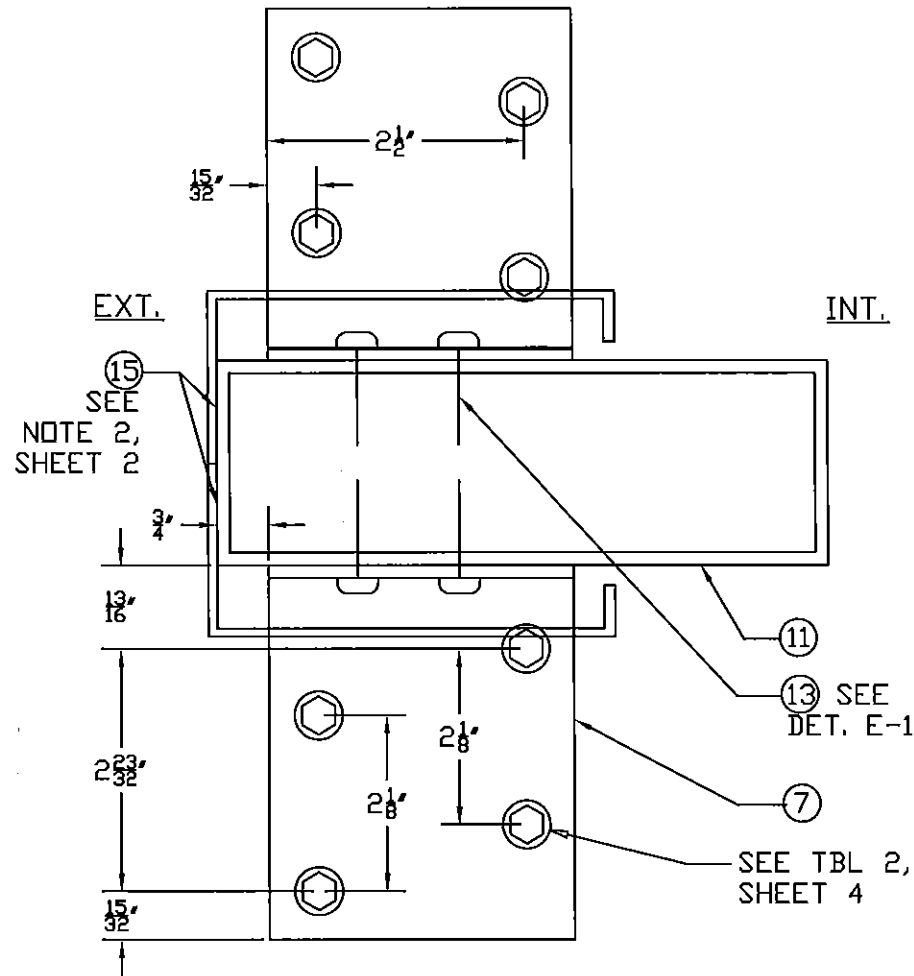


**TWO-HIGH MULLED
CONDITION**



BILL OF MATERIALS			
ITEM #	PART	DESCRIPTION	MATERIAL
1	4907A	FRAME HEAD AND SILL	6063-T5
2	5629	FRAME JAMB	6063-T5
3	4904	TOP BLADE	6063-T5
4	4903	BLADE	6063-T5
5		1/2"-14 ALL THREADED ZINC COATED ROD WITH WASHER AND NUT BOTH ENDS	AISI 1038
6	8149	1"X2"X1/8" (VERTICAL REINFORCING)	6063-T5
7	10029	3"X3"X1/8" ANGLE, 3" LONG	6061-T6
8		#10 P.P.H. X 1" SHEET METAL SCEW	
9		#8 H.W.H X 3/4" SHEET METAL SCREW	
10		1/4"-20 X 3/4" ZINC COATED BOLT WITH NUT	
11	10-0086	2"X6"X1/8" ALUMINUM MULL	6061-T6
12		INSTALLATION ANCHOR, SEE TABLE 1, SHEET 4	
13		#12 P.P.H. X 1" TEK SHEET METAL SCEW	
14		#12 P.P.H. X 2" TEK SHEET METAL SCEW	
15		DOW 795 SILICONE BUILDING SEALANT	
16		SLEEVE: 0.85"X1.15"X1/8" FORMED FROM ALUM. SHEET	3003-H14

REV.	DATE	DESCRIPTION	BY	LAT	SV
0	4/30/2009	ORIGINAL RELEASE			
1	2/10/2015	CODE UPDATE - BLADE REVISION			



**DETAIL E-3.
MULL CLIP TO SUBSTRATE
(NO HEAD/SILL ATTACHMENT)**

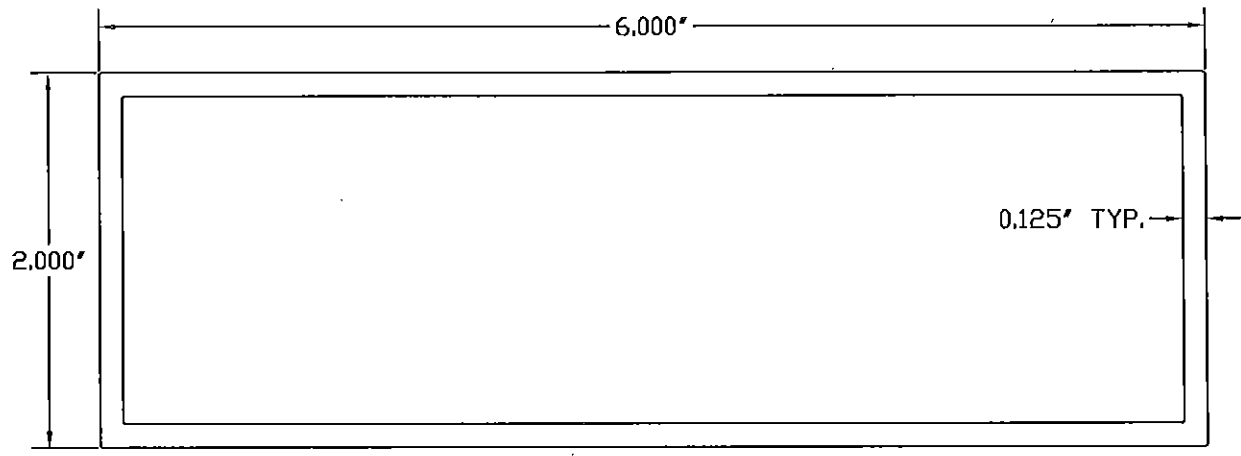
PRODUCT REVISED
to comply with the Florida Building Code
Acceptance No. 15-0218-00
Expiration Date 06/30/2020
By [Signature]
Miami/Dade Product Control

[Signature]
SCOTT WOLTERS
FLPE# 62354
WOLTERS ENGINEERING, INC.
(COA# 27194)
15211 97TH ROAD N
WEST PALM BEACH, FL 33412
MAY 19 2015

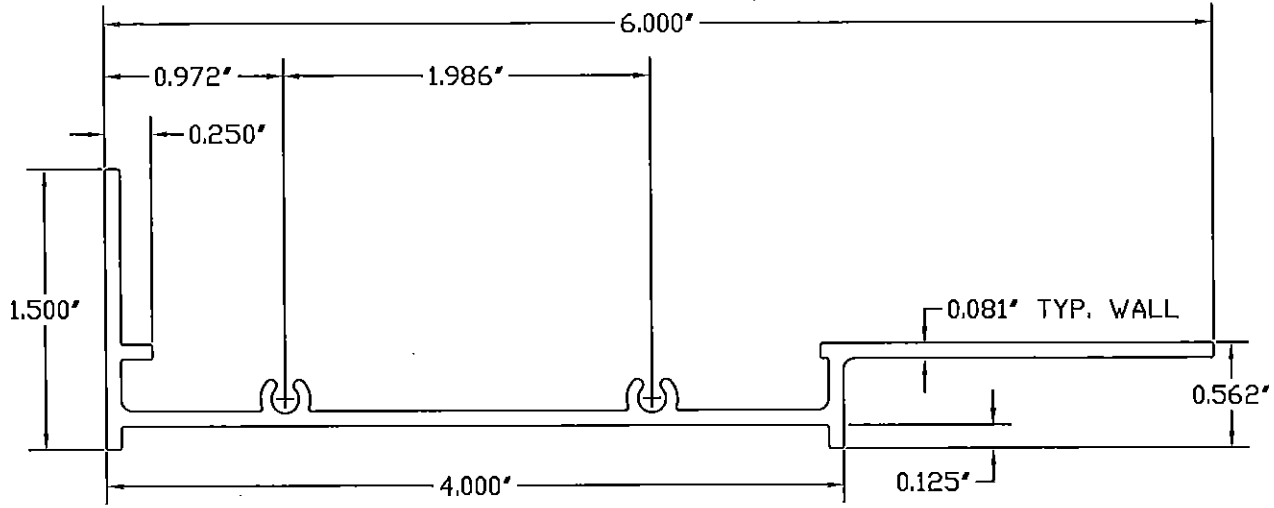
WLF-DA15 Aluminum Wall Louver
Large Missile Impact Resistant

Grille Tech, Inc.
5101 NW 36th AVE
MIAMI, FL 33142
PHONE: 305.537.0053
FAX: 305.537.0064

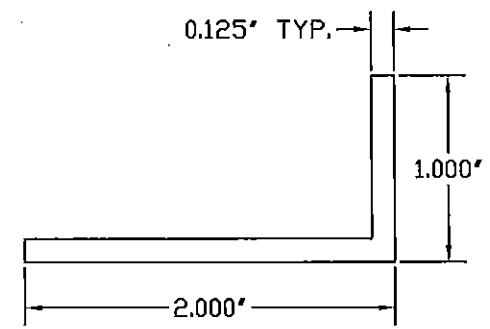
DRWG # 0551-0402-10
SCALE: NTS
SHEET 5 of 6



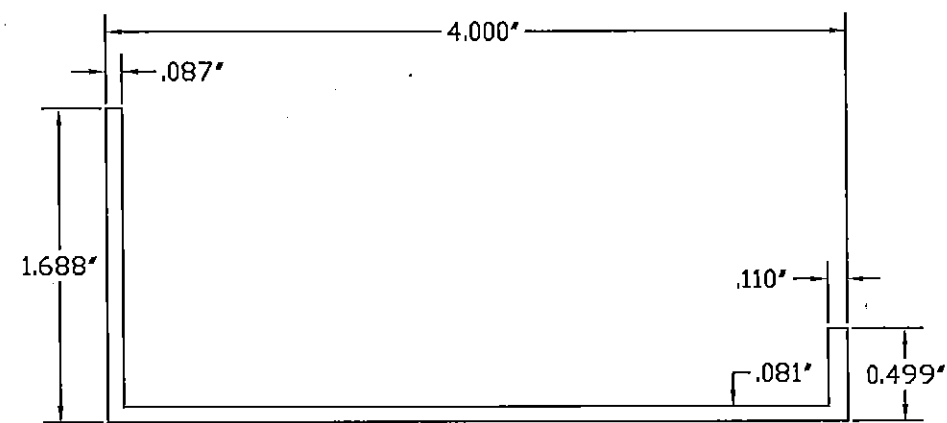
① 2X6 MULL 6061-T6 ALUM.



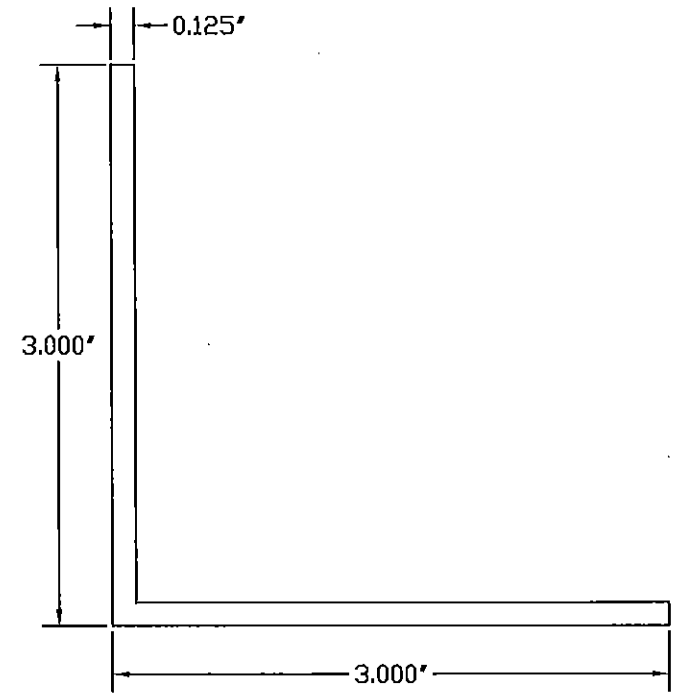
② FRAME JAMB 6063-T5 ALUM.



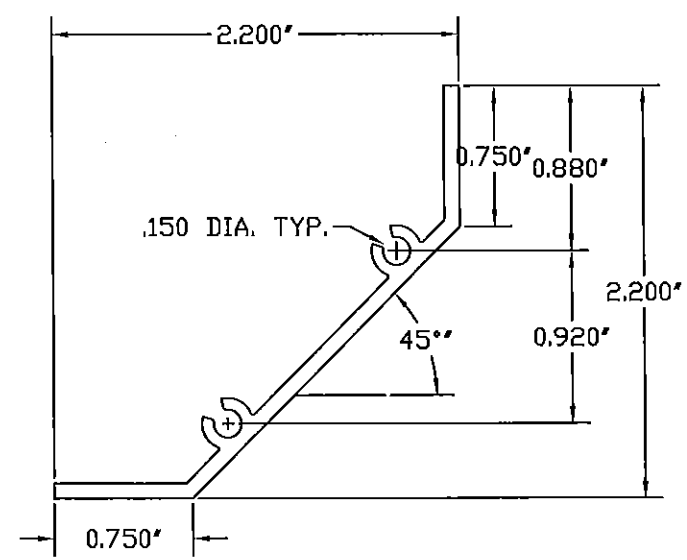
⑥ VERT. REINF. 6063-T5 ALUM.



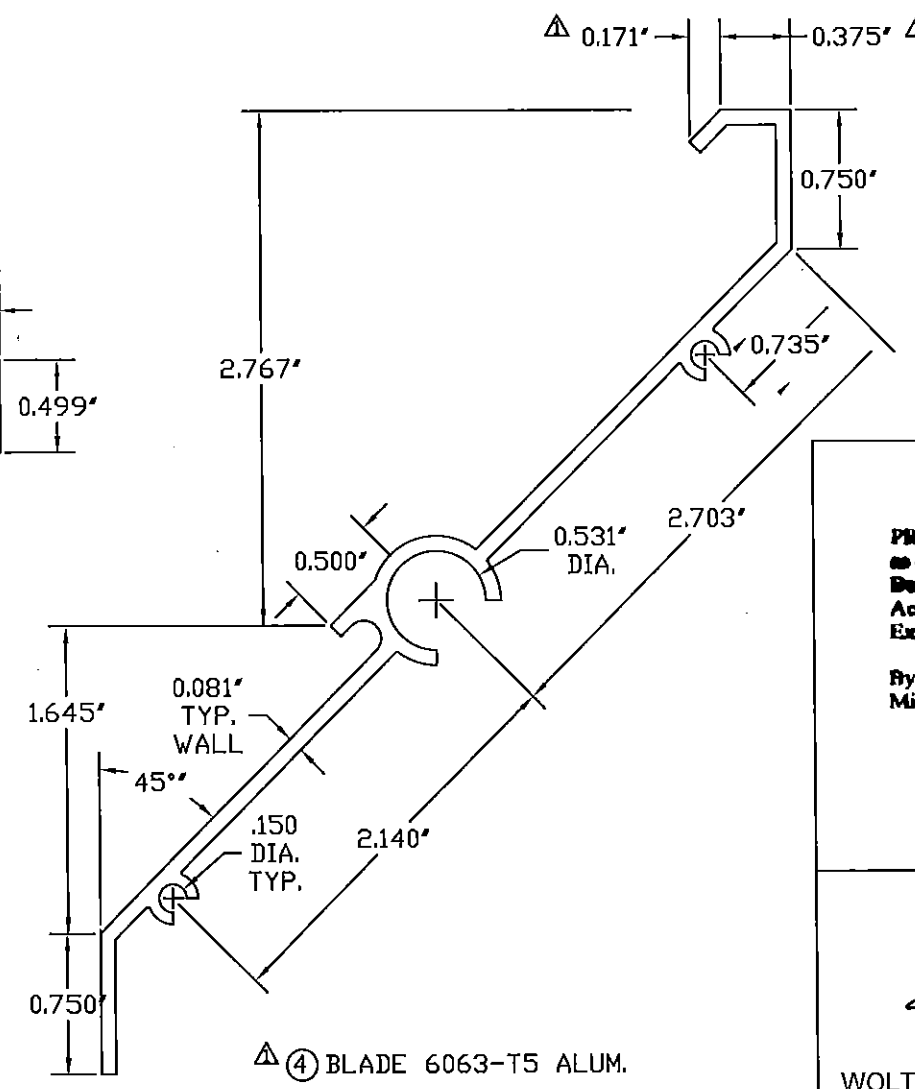
① HEAD AND SILL 6063-T5 ALUM.



⑦ 3X3 ANGLE 6061-T6 ALUM.



③ TOP BLADE 6063-T5 ALUM.



④ BLADE 6063-T5 ALUM.

PRODUCT REVISED
 as complying with the Florida
 Building Code
 Acceptance No 15-0219-08
 Expiration Date 06/30/2020
 By *[Signature]*
 Miami Dade Product Control

[Signature]
 SCOTT WOLTERS
 FLPE# 62354
 WOLTERS ENGINEERING, INC.
 (COA# 27194)
 15211 97TH ROAD N
 WEST PALM BEACH, FL 33412
 FEB 10 2015

REV.	DATE	DESCRIPTION	BY
0	4/30/2009	ORIGINAL RELEASE	LAT
1	2/10/2015	CODE UPDATE - BLADE REVISION	SV

WLF-DA15 Aluminum Wall Louver
 Large Missile Impact Resistant

Grille Tech, Inc.
 5101 NW 36th AVE
 MIAMI, FL 33142
 PHONE: 305.537.0053
 FAX: 305.537.0064

DRAWING # 0551-0402-10
 SCALE: FULL
 SHEET 6 of 6



WLC, WLF, and WLF-DA Wall Louvers

Free Area (Square Feet)

		WIDTH												
		12"	16"	20"	24"	28"	32"	36"	40"	44"	48"	52"	56"	60"
HEIGHT	12"	.2	.3	.4	.4	.5	.6	.7	.8	.9	1.0	1.1	1.1	1.2
	16"	.3	.4	.5	.7	.9	1.0	1.2	1.2	1.4	1.6	1.7	1.8	2.0
	20"	.5	.6	.8	1.0	1.2	1.4	1.5	1.8	2.0	2.2	2.3	2.5	2.6
	24"	.7	.9	1.1	1.3	1.5	1.7	1.9	2.3	2.5	2.8	3.0	3.2	3.5
	28"	.8	1.0	1.3	1.6	1.9	2.2	2.5	2.8	3.1	3.6	3.7	4.0	4.2
	32"	.8	1.2	1.5	1.9	2.2	2.6	2.9	3.3	3.6	3.9	4.3	4.6	5.0
	36"	.9	1.4	1.8	2.2	2.6	2.9	3.3	3.7	4.1	4.5	5.0	5.3	5.7
	40"	1.1	1.5	1.9	2.4	2.9	3.3	3.8	4.2	4.7	5.1	5.6	6.1	6.5
	44"	1.2	1.6	2.2	2.7	3.2	3.7	4.3	4.8	5.6	5.7	6.2	6.9	7.2
	48"	1.3	1.9	2.5	3.0	3.6	4.1	4.7	5.6	5.8	6.3	6.9	7.5	8.0
	52"	1.5	2.1	2.7	3.3	3.9	4.5	5.1	5.7	6.3	6.9	7.5	8.1	8.7
	56"	1.6	2.4	2.9	3.6	4.3	4.9	5.6	6.2	6.9	7.5	8.2	8.8	9.5
	60"	1.7	2.5	3.2	3.9	4.6	5.3	6.0	6.7	7.4	8.1	8.8	9.6	10.3
	64"	1.8	2.6	3.4	4.1	4.9	5.6	6.4	7.2	8.0	8.7	9.5	10.2	11.0
	68"	1.9	2.8	3.6	4.4	5.2	6.1	6.9	7.7	8.5	9.3	10.1	10.9	11.8
	72"	2.1	3.0	3.8	4.7	5.6	6.5	7.3	8.2	9.0	10.0	10.8	11.6	12.6
76"	2.2	3.2	4.1	5.0	5.9	6.8	7.7	8.7	9.6	10.5	11.4	12.3	13.3	
80"	2.4	3.3	4.3	5.3	6.2	7.2	8.2	9.2	10.1	11.1	12.1	13.1	14.0	
84"	2.5	3.5	4.5	5.5	6.6	7.6	8.6	9.6	10.7	11.7	12.7	13.7	14.7	
88"	2.5	3.7	4.8	5.8	6.9	8.0	9.1	10.1	10.9	12.3	13.4	14.4	15.5	
92"	2.7	3.9	5.0	6.2	7.3	8.4	9.5	10.6	11.8	12.9	14.0	15.1	16.4	
96"	2.9	4.1	5.2	6.4	7.6	8.8	10.1	11.1	12.3	13.5	14.6	15.7	16.9	