



FO_16CS

Parts List
14-February-2019

Form No. 92-42814-FO_16CS

This parts list is current as of the above revision date.
www.fujitsugeneral.com

Form Number: 92-42814-FO_16CS

Table of Contents

Model Explanation	Page 3
Parts Numbers	
Panels	Page 4
Electrical-Fan Group	Page 5
Coil Parts	Page 6
Compressor Group	Page 7
Accessories	Page 8
Drawings/Photographs	
Exploded View	Page 9
Control Box	Page 10
Valve Mounting, Compressor	Page 11
Notes	Page 12

MODEL NUMBER EXPLANATION

F	O	18	16	C	S	J	N	A	A
1		2	3	4	5	6	7	8	9

- | | |
|---|--|
| <p>(1) Brand
FO = Fujitsu</p> <p>(2) CAPACITY (BTU/HR)
18 = 18,000
24 = 24,000
30 = 30,000
36 = 36,000
42 = 42,000
48 = 48,000
60 = 60,000</p> <p>(3) Seer
16 = 16 SEER</p> <p>(4) Product Category
C = Air Conditioner</p> <p>(5) TYPE
S = Single Stage</p> <p>(6) VOLTAGE
J = 208-230/1/60
C = 208-230/3/60</p> | <p>(7) CONTROLS
N = Non-Communicating</p> <p>(8) MINOR SERIES
A = 1st Design Series
B = 2nd Design Series (LPC/HPC)</p> <p>(9) MAJOR SERIES
A = 1st Design Series
B = 2nd Design Series</p> |
|---|--|

SERIAL NUMBER EXPLANATION

W	0	8	1	3	9	9	9	9
(1)	(2)	(3)	(4)					

- (1) **PLANT CODE**
W = West Nuevo Laredo
- (2) **WEEK OF PRODUCTION**
- (3) **YEAR OF PRODUCTION**
- (4) **PRODUCTION NUMBER**

Note: For Compressor Identification Number, see Compressor Code on Rating Plate

No.	Notes	BRAND CAPACITY/SEER CATEGORY/TYPE VOLTAGE/VARIATION	FO 1816 CS JNAA/BA	FO 2416 CS JNAA/BA	FO 3016 CS JNAA/BA	FO 3616 CS CNBA	FO 3616 CS JNAA/BA	FO 4216 CS CNBA	
SHEET METAL PARTS, MISCELLANEOUS									
1		Front (Left) Panel	AE-105024-09CT	AE-105024-13CT	AE-105024-17CT	AE-105024-27CT	AE-105024-27CT	AE-105024-37CT	
2		Back (Right) Panel	AE-105024-10CT	AE-105024-14CT	AE-105024-18CT	AE-105024-28CT	AE-105024-28CT	AE-105024-38CT	
3		Base Pan	68-104457-01	68-104457-02	68-104457-03	68-104457-03	68-104457-03	68-104457-03	
4		Control Box	AE-104461-05	AE-104461-05	AE-104461-05	AE-104461-05	AE-104461-05	AE-104461-05	
5		Control Box Cover	AS-104462-01CT	AS-104462-01CT	AS-104462-01CT	AS-104462-01CT	AS-104462-01CT	AS-104462-01CT	
6		Control Box Bracket	AS-105582-02CT	AS-105582-02CT	AS-105582-02CT	AS-105582-03CT	AS-105582-03CT	AS-105582-05CT	
7		Center Post (2)	AS-104459-03CT	AS-104459-03CT	AS-104459-03CT	AS-104459-05CT	AS-104459-05CT	AS-104459-09CT	
8		Corner Post - Solid	AS-104469-09CT	AS-104469-09CT	AS-104469-09CT	AS-104469-10CT	AS-104469-10CT	AS-104469-12CT	
9		Top Panel	AS-104458-01CT	AS-104458-02CT	AS-104458-03CT	AS-104458-03CT	AS-104458-03CT	AS-104458-03CT	
10		Venturi	68-104464-02	68-104464-04	68-104464-07	68-104464-07	68-104464-07	68-104464-07	
11		Grille	95-104620-01	95-104620-02	95-104620-03	95-104620-03	95-104620-03	95-104620-03	
		Circle Label - Fujitsu	91-101123-30	91-101123-30	91-101123-30	91-101123-30	91-101123-30	91-101123-30	
		Label/Nameplate Assembly	91-103297-12	91-103297-12	91-103297-12	91-103297-12	91-103297-12	91-103297-12	
		Service Valve - Suction	See Coil Group						
		Service Valve - Liquid	See Coil Group						
		Touch-up Paint - Private Label Gray (Aerosol)	523014	523014	523014	523014	523014	523014	
		Touch-up Paint - Private Label Gray (Paint Pens)	523015	523015	523015	523015	523015	523015	

No.	Notes	BRAND CAPACITY/SEER CATEGORY/TYPE VOLTAGE/VARIATION	FO 4216 CS JNAA/BA	FO 4816 CS CNBA	FO 4816 CS JNAA/BA	FO 6016 CS CNBA	FO 6016 CS JNAA/BA		
SHEET METAL PARTS, MISCELLANEOUS									
1		Front (Left) Panel	AE-105024-37CT	AE-105024-42CT	AE-105024-42CT	AE-105024-44CT	AE-105024-44CT		
2		Back (Right) Panel	AE-105024-38CT	AE-105024-43CT	AE-105024-43CT	AE-105024-45CT	AE-105024-45CT		
3		Base Pan	68-104457-03	68-104457-03	68-104457-03	68-104457-03	68-104457-03		
4		Control Box	AE-104461-05	AE-104461-05	AE-104461-05	AE-104461-05	AE-104461-05		
5		Control Box Cover	AS-104462-01CT	AS-104462-01CT	AS-104462-01CT	AS-104462-01CT	AS-104462-01CT		
6		Control Box Bracket	AS-105582-05CT	AS-105582-06CT	AS-105582-06CT	AS-105582-11CT	AS-105582-11CT		
7		Center Post (2)	AS-104459-09CT	AS-104459-11CT	AS-104459-11CT	AS-104459-13CT	AS-104459-13CT		
8		Corner Post - Solid	AS-104469-12CT	AS-104469-13CT	AS-104469-13CT	AS-104469-14CT	AS-104469-14CT		
9		Top Panel	AS-104458-03CT	AS-104458-03CT	AS-104458-03CT	AS-104458-03CT	AS-104458-03CT		
10		Venturi	68-104464-07	68-104464-07	68-104464-07	68-104464-07	68-104464-07		
11		Grille	95-104620-03	95-104620-03	95-104620-03	95-104620-03	95-104620-03		
		Circle Label - Fujitsu	91-101123-30	91-101123-30	91-101123-30	91-101123-30	91-101123-30		
		Label/Nameplate Assembly	91-103297-12	91-103297-12	91-103297-12	91-103297-12	91-103297-12		
		Service Valve - Suction	See Coil Group						
		Service Valve - Liquid	See Coil Group						
		Touch-up Paint - Private Label Gray (Aerosol)	523014	523014	523014	523014	523014		
		Touch-up Paint - Private Label Gray (Paint Pens)	523015	523015	523015	523015	523015		

No.	Notes	BRAND CAPACITY/SEER CATEGORY/TYPE VOLTAGE/VARIATION	FO 1816 CS JNAA/BA	FO 2416 CS JNAA/BA	FO 3016 CS JNAA/BA	FO 3616 CS CNBA	FO 3616 CS JNAA/BA	FO 4216 CS CNBA	
ELECTRICAL/FAN GROUP									
20	Stk	Fan Motor	51-102008-18	51-101774-52	51-102870-08	51-102728-21	51-102728-21	51-102728-20	
21	Stk	Fan Blade	70-101323-36	70-102011-09	70-101323-39	70-101323-40	70-101323-40	70-101323-28	
22	Stk	Contactactor	42-102664-05	42-102664-05	42-102664-05	42-102664-14	42-102664-05	42-102664-14	
23		Capacitor	See Compressor Group						
23a		Capacitor Strap	AE-104562-01	AE-104562-01	AE-104562-01	N/A	AE-104562-01	N/A	
25		Crankcase Heater	See Compressor Group						
26		Grounding Lug	45-19000-01	45-19000-01	45-19000-01	45-19000-01	45-19000-01	45-19000-01	
		Low Ambient Control	See Accessories Group						
27	Stk	Low Pressure Control (Design Series 'B')	47-103670-08	47-103670-08	47-103670-08	47-103670-08	47-103670-08	47-103670-08	
27a		Valve Body - Low Pressure Control	61-18542-01	61-18542-01	61-18542-01	61-18542-01	61-18542-01	61-18542-01	
28	Stk	High Pressure Control (Design Series 'B')	47-102290-01	47-102290-01	47-102290-01	47-102290-01	47-102290-01	47-102290-01	

No.	Notes	BRAND CAPACITY/SEER CATEGORY/TYPE VOLTAGE/VARIATION	FO 4216 CS JNAA/BA	FO 4816 CS CNBA	FO 4816 CS JNAA/BA	FO 6016 CS CNBA	FO 6016 CS JNAA/BA		
ELECTRICAL/FAN GROUP									
20	Stk	Fan Motor	51-102728-20	51-102728-20	51-102728-20	51-102728-19	51-102728-19		
21	Stk	Fan Blade	70-101323-28	70-101323-29	70-101323-29	70-101323-29	70-101323-29		
22	Stk	Contactactor	42-102664-05	42-102664-14	42-102664-10	42-102664-14	42-102664-10		
23		Capacitor	See Compressor Group						
23a		Capacitor Strap	AE-104562-01	N/A	AE-104562-01	N/A	AE-104562-01		
25		Crankcase Heater	See Compressor Group						
26		Grounding Lug	45-19000-01	45-19000-01	45-19000-01	45-19000-01	45-19000-01		
		Low Ambient Control	See Accessories Group						
27	Stk	Low Pressure Control (Design Series 'B')	47-103670-08	47-103670-08	47-103670-08	47-103670-08	47-103670-08		
27a		Valve Body - Low Pressure Control	61-18542-01	61-18542-01	61-18542-01	61-18542-01	61-18542-01		
28	Stk	High Pressure Control (Design Series 'B')	47-102290-01	47-102290-01	47-102290-01	47-102290-01	47-102290-01		

No.	Notes	BRAND CAPACITY/SEER CATEGORY/TYPE VOLTAGE/VARIATION	FO 1816 CS JNAA/BA	FO 2416 CS JNAA/BA	FO 3016 CS JNAA/BA	FO 3616 CS CNBA	FO 3616 CS JNAA/BA	FO 4216 CS CNBA	
COIL GROUP									
30	Stk	Condenser Coil	AS-105339-03	AS-105364-03	AS-104917-03	AS-105365-03	AS-105365-03	AS-105370-03	
31		Service Valve - Suction	61-105049-03	61-105049-03	61-105049-03	61-105049-03	61-105049-03	61-105049-04	
32		Service Valve - Liquid	61-104914-05	61-104914-05	61-104914-05	61-104914-05	61-104914-05	61-104914-05	
33a		Valve Core	61-18551-01	61-18551-01	61-18551-01	61-18551-01	61-18551-01	61-18551-01	
33b		Valve Cap	83-100635-01	83-100635-01	83-100635-01	83-100635-01	83-100635-01	83-100635-01	
27	Stk	Low Pressure Control	See Electrical Group						
28	Stk	High Pressure Control	See Electrical Group						
	Stk	Filter Drier	83-22755-06	83-22755-06	83-22755-06	83-22755-06	83-22755-06	83-22755-06	

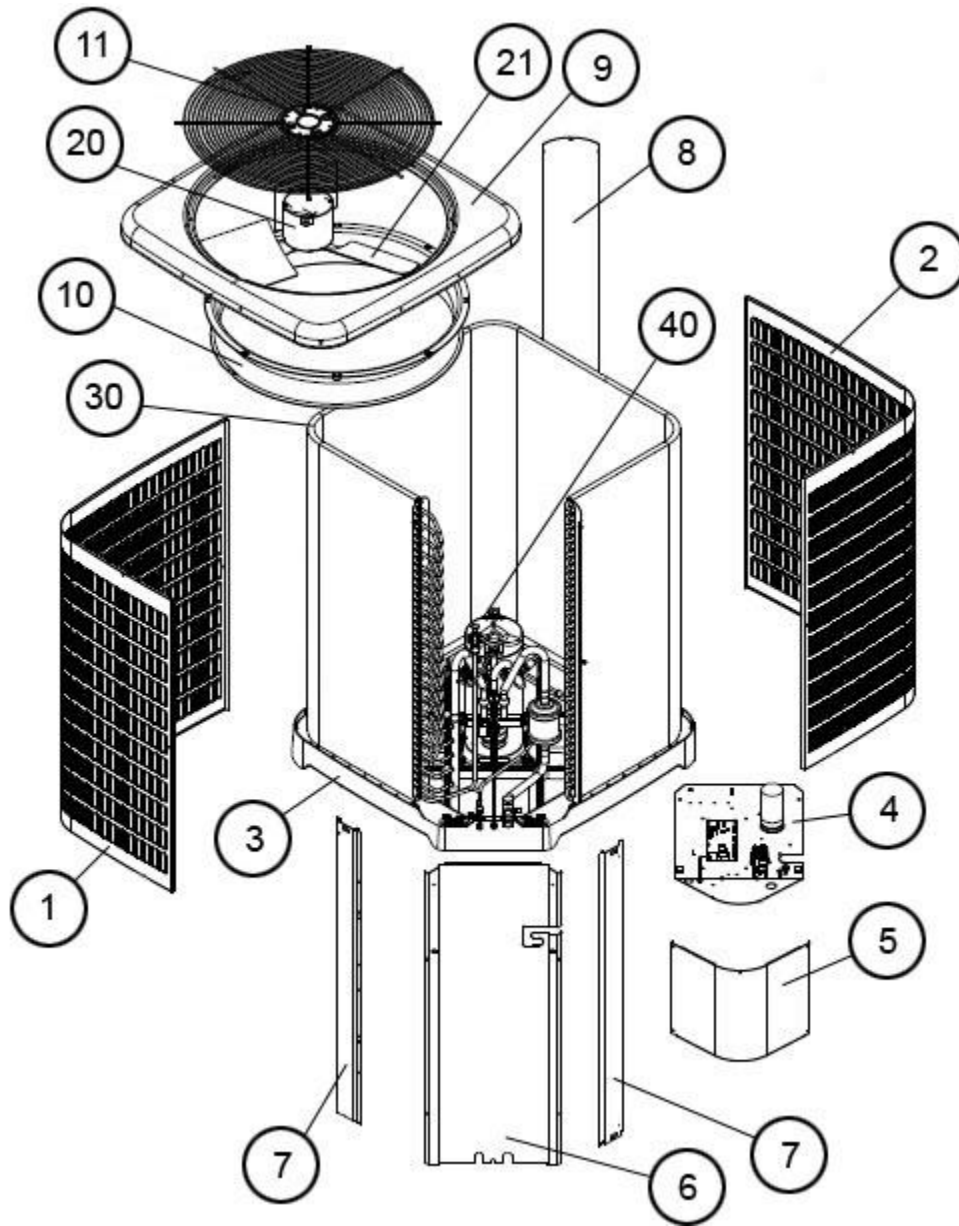
No.	Notes	BRAND CAPACITY/SEER CATEGORY/TYPE VOLTAGE/VARIATION	FO 4216 CS JNAA/BA	FO 4816 CS CNBA	FO 4816 CS JNAA/BA	FO 6016 CS CNBA	FO 6016 CS JNAA/BA		
COIL GROUP									
30	Stk	Condenser Coil	AS-105370-03	AS-105371-03	AS-105371-03	AS-105373-03	AS-105373-03		
31		Service Valve - Suction	61-105049-04	61-105049-04	61-105049-04	61-105049-04	61-105049-04		
32		Service Valve - Liquid	61-104914-05	61-104914-05	61-104914-05	61-104914-05	61-104914-05		
33a		Valve Core	61-18551-01	61-18551-01	61-18551-01	61-18551-01	61-18551-01		
33b		Valve Cap	83-100635-01	83-100635-01	83-100635-01	83-100635-01	83-100635-01		
27	Stk	Low Pressure Control	See Electrical Group						
28	Stk	High Pressure Control	See Electrical Group						
	Stk	Filter Drier	83-22755-06	83-22755-06	83-22755-06	83-22755-06	83-22755-06		

No.	Notes	BRAND CAPACITY/SEER CATEGORY/TYPE VOLTAGE/VARIATION	FO 1816 CS JNAA/BA	FO 2416 CS JNAA/BA	FO 3016 CS JNAA/BA	FO 3616 CS CNBA	FO 3616 CS JNAA/BA	FO 4216 CS CNBA	
COMPRESSOR GROUP									
		Compressor ID:	9059	9060	9061	9066	9062	9067	
40	Stk	Compressor	55-102045-122S	55-102045-104S	55-102045-143S	55-102045-138S	55-102045-103S	55-102045-145S	
		Compressor Grommet (4)	56-18518-04	56-18518-04	56-18518-04	56-18518-04	56-18518-04	56-18518-06	
		Compressor Bolt (4)	63-20072-07	63-20072-07	63-20072-07	63-20072-07	63-20072-07	63-20072-07	
23	Stk	Capacitor	43-101665-60	43-101665-10	43-101666-25	N/A	43-101666-68	N/A	
	Stk	Compressor Wiring Harness (Molded Plug)	45-100834-80	45-100834-80	45-100834-80	45-100834-80	45-100834-80	45-100834-80	
25		Crankcase Heater	See Accessories						
		Filter Drier	See Coil Group						

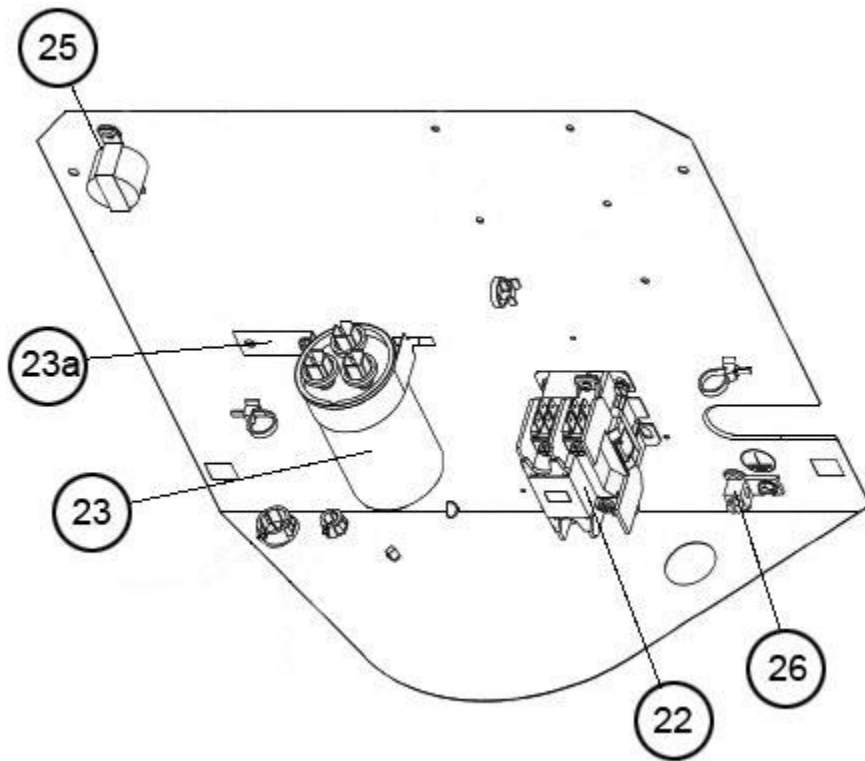
No.	Notes	BRAND CAPACITY/SEER CATEGORY/TYPE VOLTAGE/VARIATION	FO 4216 CS JNAA/BA	FO 4816 CS CNBA	FO 4816 CS JNAA/BA	FO 6016 CS CNBA	FO 6016 CS JNAA/BA		
COMPRESSOR GROUP									
		Compressor ID:	9063	9068	9064	9069	9065		
40	Stk	Compressor	55-102045-144S	55-102045-147S	55-102045-146S	55-102045-130S	55-102045-101S		
		Compressor Grommet (4)	56-18518-06	56-18518-06	56-18518-06	56-18518-06	56-18518-06		
		Compressor Bolt (4)	63-20072-07	63-20072-07	63-20072-07	63-20072-07	63-20072-07		
23	Stk	Capacitor	43-101666-68	N/A	43-101666-68	N/A	43-101666-69		
	Stk	Compressor Wiring Harness (Molded Plug)	45-100834-80	45-100834-80	45-100834-80	45-100834-80	45-100834-80		
25		Crankcase Heater	See Accessories			44-103663-13	44-103663-13		
		Filter Drier	See Coil Group						

No.	Notes	BRAND CAPACITY/SEER CATEGORY/TYPE VOLTAGE/VARIATION	FO 1816 CS JNAA/BA	FO 2416 CS JNAA/BA	FO 3016 CS JNAA/BA	FO 3616 CS CNBA	FO 3616 CS JNAA/BA	FO 4216 CS CNBA
ACCESSORIES								
		Low Ambient Control	RXAD-A08	RXAD-A08	RXAD-A08	RXAD-A08	RXAD-A08	RXAD-A08
		Compressor Crankcase Heater	44-17402-44	44-17402-44	44-17402-44	44-17402-44	44-17402-44	44-17402-45
		Compressor Sound Cover	68-23427-26	68-23427-26	68-23427-26	68-23427-26	68-23427-26	68-23427-25
		Compressor Time Delay	RXMD-B01	RXMD-B01	RXMD-B01	RXMD-B01	RXMD-B01	RXMD-B01
		Low Pressure Control	RXAC-A07	RXAC-A07	RXAC-A07	RXAC-A07	RXAC-A07	RXAC-A07
		High Pressure Control	RXAB-A07	RXAB-A07	RXAB-A07	RXAB-A07	RXAB-A07	RXAB-A07
		Compressor Hard Start Kit	SK-A1	SK-A1	SK-A1	N/A	SK-A1	N/A

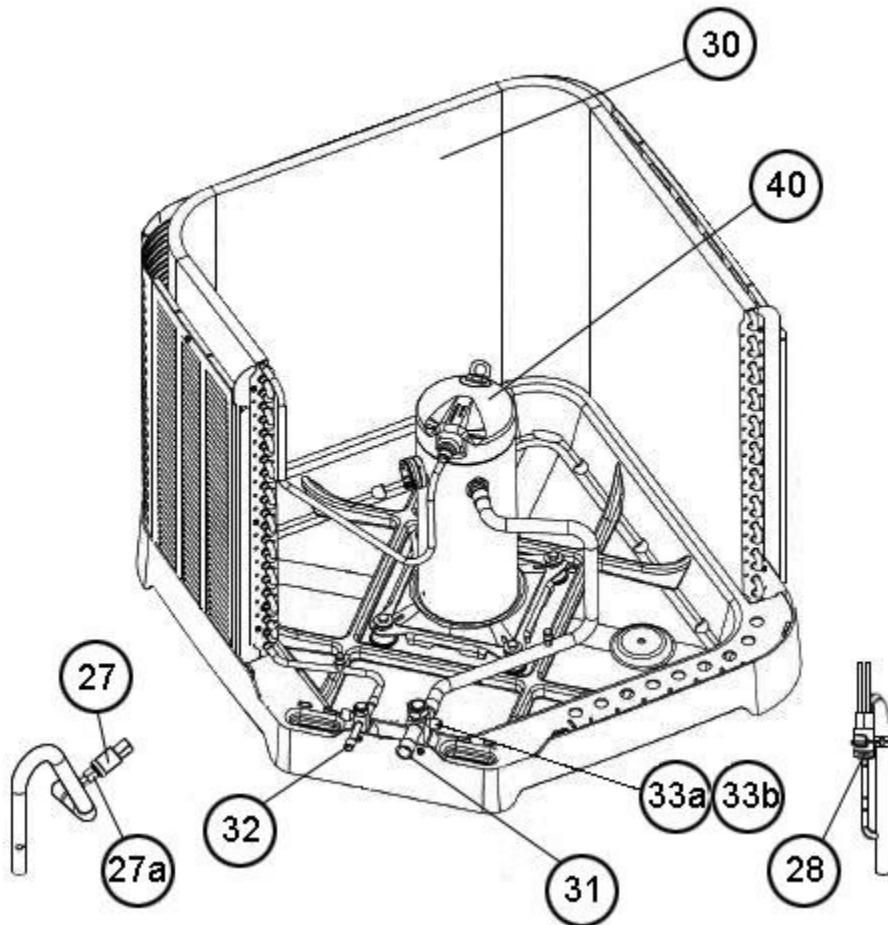
No.	Notes	BRAND CAPACITY/SEER CATEGORY/TYPE VOLTAGE/VARIATION	FO 4216 CS JNAA/BA	FO 4816 CS CNBA	FO 4816 CS JNAA/BA	FO 6016 CS CNBA	FO 6016 CS JNAA/BA	
ACCESSORIES								
		Low Ambient Control	RXAD-A08	RXAD-A08	RXAD-A08	RXAD-A08	RXAD-A08	
		Compressor Crankcase Heater	44-17402-45	44-17402-45	44-17402-45	Factory Standard		
		Compressor Sound Cover	68-23427-25	68-23427-25	68-23427-25	68-23427-25	68-23427-25	
		Compressor Time Delay	RXMD-B01	RXMD-B01	RXMD-B01	RXMD-B01	RXMD-B01	
		Low Pressure Control	RXAC-A07	RXAC-A07	RXAC-A07	RXAC-A07	RXAC-A07	
		High Pressure Control	RXAB-A07	RXAB-A07	RXAB-A07	RXAB-A07	RXAB-A07	
		Compressor Hard Start Kit	SK-A1	N/A	SK-A1	N/A	SK-A1	



Exploded View



Control Box



Valve Mounting, Compressor

NOTES

Stk It is recommended that stock be maintained for this part.
N/A Not Applicable