

FB_TS

Parts List
16-August-2019



This parts list is current as of the above revision date.
www.fujitsugeneral.com

Form Number: 92-42814-FB_TS

Table of Contents

Model Explanation	Page 3
Parts Numbers	
Panels - MSC (1)	Page 4
Panels - MSC (2)	Page 5
ELG (1)	Page 6
ELG (2)	Page 7
BG	Page 8
EHG	Page 9
EHG (2)	Page 10
CPG	Page 11
ACG	Page 11
Drawings/Photographs	
Exploded View	Page 12
Door Assembly	Page 13
Electrical Assembly	Page 14
Flow Check Piston Assembly	Page 15
Notes	Page 16

MODEL NUMBER EXPLANATION

F	B	1	7	T	S	A	07	N	_	GH	17
1	2	3		4	5	6	7	8	9	10	11

- | | |
|---|---|
| <p>1 TRADEBRAND IDENTIFICATION
F = Fujitsu</p> <p>2 BLOWER UNIT
B = Blower Unit</p> <p>3 CABINET WIDTH
17=17.5 in. 24=24.5 in.
21=21.0 in. 25=24.5 in.</p> <p>4 MOTOR TYPE
T = Constant Torque</p> <p>5 SPEED (Stage)
S = Single Stage</p> <p>6 VOLTAGE
A=115V-1-60
J=208/230V-1-60</p> | <p>7 ELECTRIC HEAT
00 = No Heat
05 = 4.9 KW
07 = 7.0 KW
10 = 10.0 KW</p> <p>8 COMMUNICATION
N = Non-Communicating</p> <p>9 MINOR SERIES
Blank = First
B = Second</p> <p>10 Connection
GH = Refrigerant Connection - Horizontal</p> <p>11 Coil Casing
17 = 17.5 in. coil casing
21 = 21 in. coil casing
24 = 24.5 in. coil casing</p> |
|---|---|

SERIAL NUMBER EXPLANATION

T	N	0	8	0	7	0	0	0	0	1
1	2	3		4		5				

- 1 SEQUENCE MANUFACTURER**
- 2 PRODUCTION LOCATION**
N = Nuevo Laredo
- 3 WEEK**
- 4 YEAR**
- 5 PRODUCTION NUMBER**

No.	Notes	BRAND/CATEGORY CABINET WIDTH MOTOR TYPE/SPEED VOLTAGE/HEAT COMMUNICATION	FB	FB	FB	FB
			17 TS A00 N	17 TS J05 N	17 TS J07 N	21 TS A00 N
PANELS, SHEET METAL, MISCELLANEOUS						
1		Blower Jacket	N/A	N/A	N/A	N/A
2		Blower Shelf - Cover/Top Deck	AS-58389-05	AS-58389-05	AS-58389-05	AS-58389-06
		Rear Blower Support	AE-58349-05	AE-58349-05	AE-58349-05	AE-58349-06
3		Bottom Channel	AE-58381-02	AE-58381-02	AE-58381-02	AE-58381-03
4		Blower Door Panel	AE-59440-25	AE-59440-26	AE-59440-26	AE-59441-21
4a		Circuit Breaker Cover (includes gasket)	N/A	68-101808-01	68-101808-01	N/A
4b		Circuit Breaker Cover Gasket	N/A	68-24337-02	68-24337-02	N/A
6		Filter - Plastic	68-101807-02	68-101807-02	68-101807-02	68-101807-03
12		Center Panel (First Series)	AE-58385-02	AE-58385-04	AE-58385-02	AE-58385-07
12		Center Panel (Second 'B' Series)	N/A	AE-58385-04	AE-58385-04	N/A
A		Coil Jacket	AE-103177-02	AE-103177-02	AE-103177-02	AE-103177-03
B		Coil Door Panel	AE-59440-21	AE-59440-21	AE-59440-21	AE-59441-21
C		Filter Door	AE-59440-22	AE-59440-22	AE-59440-22	AE-59441-22
D		Coil Rail Top (2)	AE-103180-01	AE-103180-01	AE-103180-01	AE-103180-01
E		Coil Rail Bottom (2)	AE-103181-01	AE-103181-01	AE-103181-01	AE-103181-01
		Rear Coil Support	AE-103179-02	AE-103179-02	AE-103179-02	AE-103179-03
F		Mounting Bracket (Control Board)	AE-90898-01	AE-90898-01	AE-90898-01	AE-90898-01

No.	Notes	BRAND/CATEGORY CABINET WIDTH MOTOR TYPE/SPEED VOLTAGE/HEAT COMMUNICATION	FB	FB	FB	FB
			21 TS J05 N	21 TS J07 N	21 TS J10 N	24 TS A00 N
PANELS, SHEET METAL, MISCELLANEOUS						
1		Jacket	N/A	N/A	N/A	N/A
2		Blower Shelf - Cover/Top Deck	AS-58389-06	AS-58389-06	AS-58389-06	AS-58389-07
		Rear Blower Support	AE-58349-06	AE-58349-06	AE-58349-06	AE-58349-06
3		Bottom Channel	AE-58381-03	AE-58381-03	AE-58381-03	AE-58381-04
4		Blower Door Panel	AE-59441-21	AE-59441-21	AE-59441-21	AE-59442-21
4a		Circuit Breaker Cover (includes gasket)	68-101808-01	68-101808-01	68-101808-01	N/A
4b		Circuit Breaker Cover Gasket	68-24337-02	68-24337-02	68-24337-02	N/A
6		Filter - Plastic	68-101807-03	68-101807-03	68-101807-03	68-101807-04
12		Center Panel	AE-58385-08	AE-58385-08	AE-58385-08	AE-58385-14
A		Coil Jacket	AE-103177-03	AE-103177-03	AE-103177-03	AE-103177-04
B		Coil Door Panel	AE-59441-21	AE-59441-21	AE-59441-21	AE-59442-21
C		Filter Door	AE-59441-22	AE-59441-22	AE-59441-22	AE-59442-22
D		Coil Rail Top (2)	AE-103180-01	AE-103180-01	AE-103180-01	AE-103180-01
E		Coil Rail Bottom (2)	AE-103181-01	AE-103181-01	AE-103181-01	AE-103181-01
		Rear Coil Support	AE-103179-03	AE-103179-03	AE-103179-03	AE-103179-04
F		Mounting Bracket (Control Board)	AE-90898-01	AE-90898-01	AE-90898-01	AE-90898-01

No.	Notes	BRAND/CATEGORY CABINET WIDTH MOTOR TYPE/SPEED VOLTAGE/HEAT COMMUNICATION	FB 24 TS J05 N	FB 24 TS J07 N	FB 24 TS J10 N
PANELS, SHEET METAL, MISCELLANEOUS					
1		Jacket	N/A	N/A	N/A
2		Blower Shelf - Cover/Top Deck	AS-58389-07	AS-58389-07	AS-58389-07
		Rear Blower Support	AE-58349-06	AE-58349-06	AE-58349-06
3		Bottom Channel	AE-58381-04	AE-58381-04	AE-58381-04
4		Blower Door Panel	AE-59442-21	AE-59442-21	AE-59442-21
4a		Circuit Breaker Cover (includes gasket)	68-101808-01	68-101808-01	68-101808-01
4b		Circuit Breaker Cover Gasket	68-24337-02	68-24337-02	68-24337-02
6		Filter - Plastic	68-101807-04	68-101807-04	68-101807-04
12		Center Panel (First Series)	AE-58385-16	AE-58385-16	AE-58385-16
12		Center Panel (Second 'B' Series)	AE-58385-30	AE-58385-32	AE-58385-32
A		Coil Jacket	AE-103177-04	AE-103177-04	AE-103177-04
B		Coil Door Panel	AE-59442-21	AE-59442-21	AE-59442-21
C		Filter Door	AE-59442-22	AE-59442-22	AE-59442-22
D		Coil Rail Top (2)	AE-103180-01	AE-103180-01	AE-103180-01
E		Coil Rail Bottom (2)	AE-103181-01	AE-103181-01	AE-103181-01
		Rear Coil Support	AE-103179-04	AE-103179-04	AE-103179-04
F		Mounting Bracket (Control Board)	AE-90898-01	AE-90898-01	AE-90898-01

No.	Notes	BRAND/CATEGORY CABINET WIDTH MOTOR TYPE/SPEED VOLTAGE/HEAT COMMUNICATION	FB 25 TS A00 N	FB 25 TS J10 N	
PANELS, SHEET METAL, MISCELLANEOUS					
1		Jacket	N/A	N/A	
2		Blower Shelf-Cover/Top Deck	AS-58389-04	AS-58389-04	
		Rear Blower Support	AE-58349-06	AE-58349-06	
3		Bottom Channel	AE-58381-04	AE-58381-04	
4		Blower Door Panel	AE-59442-25	AE-59442-26	
4a		Circuit Breaker Cover (includes gasket)	N/A	68-101808-01	
4b		Circuit Breaker Cover Gasket	N/A	68-24337-02	
6		Filter - Plastic	68-101807-04	68-101807-04	
12		Center Panel (First Series)	AE-58385-24	AE-58385-24	
12		Center Panel (Second 'B' Series)	N/A	AE-58385-31	
A		Coil Jacket	AE-103177-04	AE-103177-04	
B		Coil Door Panel	AE-59442-21	AE-59442-21	
C		Filter Door	AE-59442-22	AE-59442-22	
D		Coil Rail Top (2)	AE-103180-01	AE-103180-01	
E		Coil Rail Bottom (2)	AE-103181-01	AE-103181-01	
		Rear Coil Support	AE-103179-04	AE-103179-04	
F		Mounting Bracket (Control Board)	AE-90898-01	AE-90898-01	

No.	Notes	BRAND/CATEGORY CABINET WIDTH MOTOR TYPE/SPEED VOLTAGE/HEAT COMMUNICATION	FB 17 TS A00 N	FB 17 TS J05 N	FB 17 TS J07 N	FB 21 TS A00 N
ELECTRICAL GROUP						
13		Sheath Heater w/Bracket	See Electric Heat Group			
14		Sequencing / Heat Relay	See Electric Heat Group			
15	Stk	Transformer	46-23115-01	46-23115-02	46-23115-02	46-23115-01
16		Limit Switch	See Electric Heat Group			
17		Circuit Breaker	N/A	42-23201-01	42-23201-01	N/A
		Finger Stop Voltage	N/A	45-23203-01 (2)	45-23203-01 (2)	N/A
		Jumper Bar - 4 Pole	N/A	N/A	N/A	N/A
18		Watt Restrictors	N/A	N/A	47-23117-01	N/A
19	Stk	Defrost Heater Control	N/A	N/A	47-23118-01	N/A
20	Stk	Control Board	47-102077-05	47-102077-05	47-102077-05	47-102077-05
		Terminal Block	45-23222-02	N/A	N/A	45-23222-02
	Stk	Limit Control Manual Reset (Second 'B' series only)	N/A	47-22861-06	47-22861-06	N/A

No.	Notes	BRAND/CATEGORY CABINET WIDTH MOTOR TYPE/SPEED VOLTAGE/HEAT COMMUNICATION	FB 21 TS J05 N	FB 21 TS J07 N	FB 21 TS J10 N	FB 24 TS A00 N
ELECTRICAL GROUP						
13		Sheath Heater w/Bracket	See Electric Heat Group			
14		Sequencing / Heat Relay	See Electric Heat Group			
15	Stk	Transformer	46-23115-02	46-23115-02	46-23115-02	46-23115-01
16		Limit Switch	See Electric Heat Group			
17		Circuit Breaker	42-23201-01	42-23201-01	42-23201-01	N/A
		Finger Stop Voltage	45-23203-01 (2)	45-23203-01 (2)	45-23203-01 (2)	N/A
		Jumper Bar - 4 Pole	N/A	N/A	N/A	N/A
18		Watt Restrictors	N/A	N/A	N/A	N/A
19		Defrost Heater Control	N/A	N/A	N/A	N/A
20	Stk	Control Board	47-102077-05	47-102077-05	47-102077-05	47-102077-05
		Terminal Block	N/A	N/A	N/A	45-23222-02
	Stk	Limit Control Manual Reset (Second 'B' series only)	47-22861-06	47-22861-07	47-22861-08	

No.	Notes	BRAND/CATEGORY CABINET WIDTH MOTOR TYPE/SPEED VOLTAGE/HEAT COMMUNICATION	FB 24 TS J05 N	FB 24 TS J07 N	FB 24 TS J10 N	FB 25 TS A00 N
ELECTRICAL GROUP						
13		Sheath Heater w/Bracket	See Electric Heat Group			
14		Sequencing / Heat Relay	See Electric Heat Group			
15	Stk	Transformer	46-23115-02	46-23115-02	46-23115-02	46-23115-01
16		Limit Switch	See Electric Heat Group			
17		Circuit Breaker	42-23201-01 (1)	42-23201-01 (1)	42-23201-01 (1)	N/A
		Finger Stop Voltage	45-23203-01 (2)	45-23203-01 (2)	45-23203-01 (2)	N/A
		Jumper Bar - 4 Pole	N/A	N/A	N/A	N/A
18		Watt Restrictors	N/A	N/A	N/A	N/A
19		Defrost Heater Control	N/A	N/A	N/A	N/A
20	Stk	Control Board	47-102077-05	47-102077-05	47-102077-05	47-102077-05
		Terminal Block	N/A	N/A	N/A	45-23222-02
	Stk	Limit Control Manual Reset (Second 'B' series only)	47-22861-07	47-22861-06	47-22861-08	

No.	Notes	BRAND/CATEGORY CABINET WIDTH MOTOR TYPE/SPEED VOLTAGE/HEAT COMMUNICATION	FB 25 TS J10 N			
ELECTRICAL GROUP						
13		Sheath Heater w/Bracket	See Electric Heat Group			
14		Sequencing / Heat Relay	See Electric Heat Group			
15	Stk	Transformer	46-23115-02			
16		Limit Switch	See Electric Heat Group			
17		Circuit Breaker	42-23201-01 (1)			
		Finger Stop Voltage	45-23203-01 (2)			
		Jumper Bar - 4 Pole	N/A			
18		Watt Restrictors	N/A			
19		Defrost Heater Control	N/A			
20	Stk	Control Board	47-102077-05			
		Terminal Block	N/A			
	Stk	Limit Control Manual Reset (Second 'B' series only)	47-22861-06			

No.	Notes	BRAND/CATEGORY CABINET WIDTH MOTOR TYPE/SPEED VOLTAGE/HEAT COMMUNICATION	FB 17 TS A00 N	FB 17 TS J05 N	FB 17 TS J07 N	FB 21 TS A00 N	FB 21 TS J05 N	FB 21 TS J07 N
BLOWER GROUP								
7		Blower Housing	AS-58391-01	AS-58391-23	AS-58391-03	AS-58391-05	AS-58391-24	AS-58391-07
8		Air Straightener	AE-58392-02	AE-58392-02	AE-58392-02	AE-58392-02	AE-58392-02	AE-58392-02
9	Stk	Blower Wheel	70-23111-50	70-23111-50	70-23111-50	70-23111-51	70-23111-51	70-23111-51
		Blockoff Plate (2)	AS-59320-02	AS-59320-02	AS-59320-02	AS-59320-02	AS-59320-02	AS-59320-02
10	Stk	Blower Motor	51-104354-02	51-104358-04	51-104358-04	51-102172-02	51-104359-10	51-104359-10
11		Motor Mounting Kit	70-24104-81	70-24104-81	70-24104-81	70-24104-81	70-24104-81	70-24104-81
		Plug Housing Assembly - T-Stat	45-101891-03	45-101891-03	45-101891-03	45-101891-03	45-101891-03	45-101891-03

No.	Notes	BRAND/CATEGORY CABINET WIDTH MOTOR TYPE/SPEED VOLTAGE/HEAT COMMUNICATION MINOR SERIES	FB 17 TS J05 N B	FB 17 TS J07 N B	FB 21 TS J05 N B	FB 21 TS J07 N B	FB 21 TS J10 N B
BLOWER GROUP							
7		Blower Housing	AS-58391-28	AS-58391-29	AS-58391-30	AS-58391-27	AS-58391-31
8		Air Straightener	AE-58392-02	AE-58392-02	AE-58392-02	AE-58392-02	AE-58392-02
9	Stk	Blower Wheel	70-23111-50	70-23111-50	70-23111-51	70-23111-51	70-23111-51
		Blockoff Plate (2)	AS-59320-02	AS-59320-02	AS-59320-02	AS-59320-02	AS-59320-02
10	Stk	Blower Motor	51-106544-04	51-106544-04	51-106545-10	51-106545-10	51-106545-10
11		Motor Mounting Kit	70-24104-81	70-24104-81	70-24104-81	70-24104-81	70-24104-81
		Plug Housing Assembly - T-Stat	45-101891-03	45-101891-03	45-101891-03	45-101891-03	45-101891-03

No.	Notes	BRAND/CATEGORY CABINET WIDTH MOTOR TYPE/SPEED VOLTAGE/HEAT COMMUNICATION	FB 21 TS J10 N	FB 24 TS A00 N	FB 24 TS J05 N	FB 24 TS J07 N	FB 24 TS J10 N
BLOWER GROUP							
7		Blower Housing	AS-58391-08	AS-58391-10	AS-58391-25	AS-58391-12	AS-58391-13
8		Air Straightener	AE-58392-02	AE-58392-02	AE-58392-02	AE-58392-02	AE-58392-02
9	Stk	Blower Wheel	70-23111-51	70-23111-43	70-23111-43	70-23111-43	70-23111-43
		Blockoff Plate (2)	AS-59320-02	AS-59320-02	AS-59320-02	AS-59320-02	AS-59320-02
10	Stk	Blower Motor	51-104359-10	51-104356-03	51-104360-08	51-104360-08	51-104360-08
11		Motor Mounting Kit	70-24104-81	70-24104-81	70-24104-81	70-24104-81	70-24104-81
		Plug Housing Assembly - T-Stat	45-101891-03	45-101891-03	45-101891-03	45-101891-03	45-101891-03

No.	Notes	BRAND/CATEGORY CABINET WIDTH MOTOR TYPE/SPEED VOLTAGE/HEAT COMMUNICATION MINOR SERIES	FB 24 TS J05 N B	FB 24 TS J07 N B	FB 24 TS J10 N B	FB 25 TS J10 N B
BLOWER GROUP						
7		Blower Housing		AS-58391-32	AS-58391-33	AS-58391-35
8		Air Straightener		AE-58392-02	AE-58392-02	AE-58392-02
9	Stk	Blower Wheel		70-23111-43	70-23111-43	70-23111-44
		Blockoff Plate (2)		AS-59320-02	AS-59320-02	N/A
10	Stk	Blower Motor		51-106546-08	51-106546-08	51-106546-19
11		Motor Mounting Kit		70-24104-81	70-24104-81	70-24104-81
		Plug Housing Assembly - T-Stat		45-101891-03	45-101891-03	45-101891-03

No.	Notes	BRAND/CATEGORY CABINET WIDTH MOTOR TYPE/SPEED VOLTAGE/HEAT COMMUNICATION	FB 25 TS A00 N	FB 25 TS J10 N			
BLOWER GROUP							
7		Blower Housing	AS-58391-16	AS-58391-19			
8		Air Straightener	AE-58392-02	AE-58392-02			
9	Stk	Blower Wheel	70-23111-44	70-23111-44			
		Blockoff Plate (2)	N/A	N/A			
10	Stk	Blower Motor	51-104356-04	51-104360-19			
11		Motor Mounting Kit	70-24104-81	70-24104-81			
		Plug Housing Assembly - T-Stat	45-101891-03	45-101891-03			

No.	Notes	BRAND/CATEGORY	FB	FB	FB	FB
		CABINET WIDTH	17	17	17	17
		MOTOR TYPE/SPEED	TS	TS	TS	TS
		VOLTAGE/HEAT	A00	J05	J07	A00
		COMMUNICATION	N	N	N	N
ELECTRIC HEAT GROUP						
13	Stk	Sheath Heater w/Bracket	N/A	AS-58386-11 (1)	AS-58386-12 (2)	N/A
14	Stk	Sequencing / Heat Relay (First Series only)	N/A	42-23116-06 (Type 14S22)	42-23116-09 (14SX222)	N/A
14	Stk	Sequencing / Heat Relay	N/A	N/A	N/A	N/A
14	Stk	Power Relay (Second 'B' Series only)	N/A	42-101208-05	42-101208-05	N/A
16	Stk	Limit Switch - Position 1 (Green)	N/A	47-23113-01	47-23113-01	N/A
16	Stk	Limit Switch - Position 2 (Blue)	N/A	N/A	47-23113-02	N/A
16		Limit Switch - Position 3 (Blue)	N/A	N/A	N/A	N/A
16		Limit Switch - Position 4	N/A	N/A	N/A	N/A
16		Limit Switch - Position 5	N/A	N/A	N/A	N/A
16		Limit Switch - Position 6	N/A	N/A	N/A	N/A

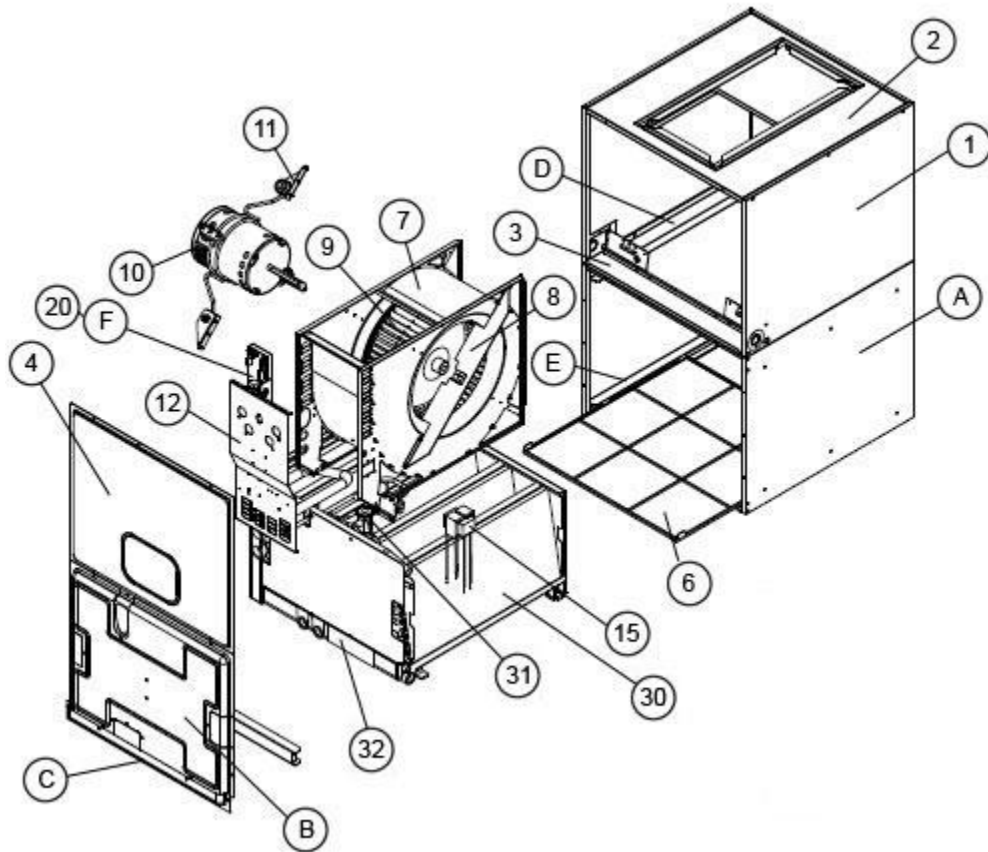
No.	Notes	BRAND/CATEGORY	FB	FB	FB	FB
		CABINET WIDTH	21	21	21	21
		MOTOR TYPE/SPEED	TS	TS	TS	TS
		VOLTAGE/HEAT	A00	J05	J07	J10
		COMMUNICATION	N	N	N	N
ELECTRIC HEAT GROUP						
13	Stk	Sheath Heater w/Bracket	N/A	AS-58386-11 (2)	AS-58386-12 (2)	AS-58386-12 (3)
14	Stk	Sequencing / Heat Relay	N/A	42-23116-06 (Type 14S22)	42-23116-09 (14SX222)	42-23116-06 (Type 14S22) Terminals M1 - M4
14	Stk	Sequencing / Heat Relay	N/A	N/A	N/A	42-23116-08 (Type 12S22) Terminals M5 - M8
14	Stk	Power Relay (Second 'B' Series only)	N/A	42-101208-05	42-101208-05	42-101208-05
16	Stk	Limit Switch - Position 1 (Yellow)	N/A	47-23113-03	47-23113-03	47-23113-03
16	Stk	Limit Switch - Position 2 (Blue)	N/A	N/A	47-23113-02	47-23113-02
16	Stk	Limit Switch - Position 3 (White)	N/A	N/A	N/A	47-23113-04
16		Limit Switch - Position 4 (White)	N/A	N/A	N/A	N/A
16		Limit Switch - Position 5	N/A	N/A	N/A	N/A
16		Limit Switch - Position 6	N/A	N/A	N/A	N/A

No.	Notes	BRAND/CATEGORY CABINET WIDTH MOTOR TYPE/SPEED VOLTAGE/HEAT COMMUNICATION	FB 24 TS A00 N	FB 24 TS J05 N	FB 24 TS J07 N	FB 24 TS J10 N
ELECTRIC HEAT GROUP						
13	Stk	Sheath Heater w/Bracket	N/A	AS-58386-11 (2)	AS-58386-12 (2)	AS-58386-12 (3)
14	Stk	Sequencing / Heat Relay	N/A	42-23116-06 (Type 14S22)	42-23116-09 (14SX222)	42-23116-06 (Type 14S22) Terminals M1 - M4
14	Stk	Sequencing / Heat Relay	N/A	N/A	N/A	42-23116-08 (Type 12S22) Terminals M5 - M8
14	Stk	Power Relay (Second 'B' Series only)	N/A	42-101208-05	42-101208-05	42-101208-05
16	Stk	Limit Switch - Position 1 (Green)	N/A	47-23113-01	47-23113-01	47-23113-01
16	Stk	Limit Switch - Position 2 (Red)	N/A	N/A	47-23113-05	47-23113-05
16	Stk	Limit Switch - Position 3 (Red)	N/A	N/A	N/A	47-23113-05
16		Limit Switch - Position 4 (White)	N/A	N/A	N/A	N/A
16		Limit Switch - Position 5 (White)	N/A	N/A	N/A	N/A
16		Limit Switch - Position 6	N/A	N/A	N/A	N/A

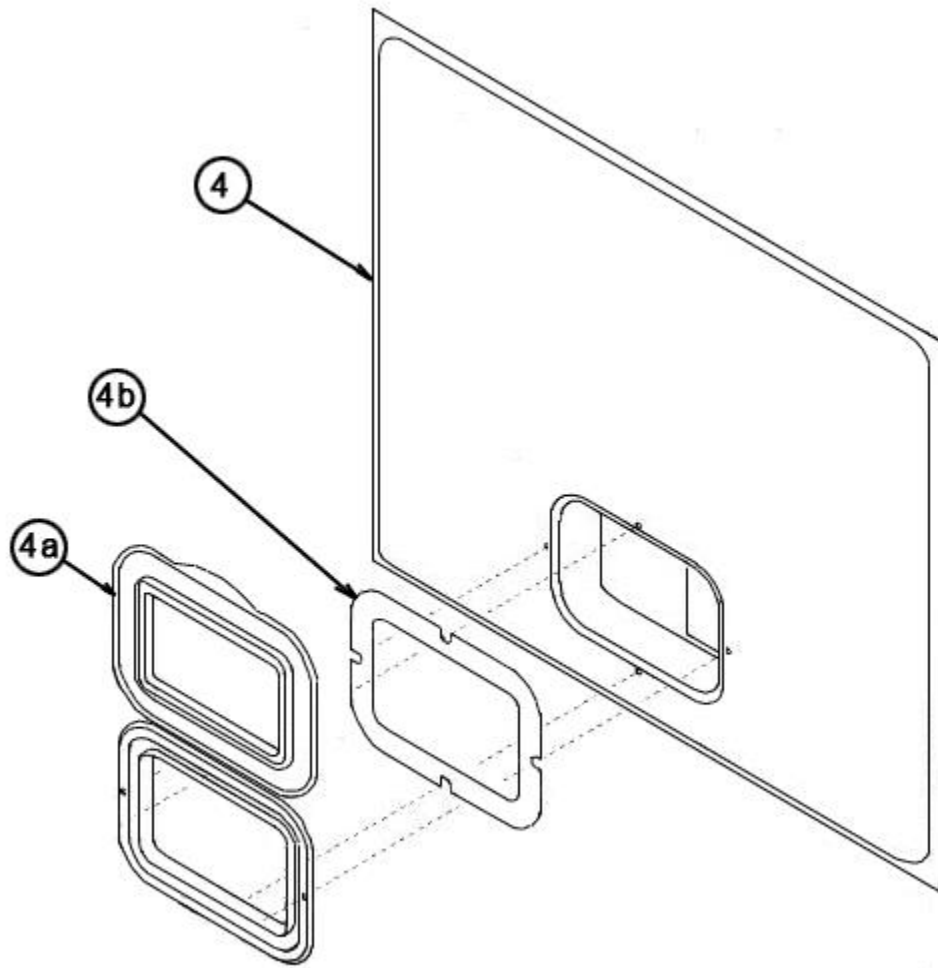
No.	Notes	BRAND/CATEGORY CABINET WIDTH MOTOR TYPE/SPEED VOLTAGE/HEAT COMMUNICATION	FB 25 TS A00 N	FB 25 TS J10 N		
ELECTRIC HEAT GROUP						
13	Stk	Sheath Heater w/Bracket	N/A	AS-58386-12 (3)		
14	Stk	Sequencing / Heat Relay	N/A	42-23116-06 (Type 14S22) Terminals M1 - M4		
14	Stk	Sequencing / Heat Relay	N/A	42-23116-08 (Type 12S22) Terminals M5 - M8		
14	Stk	Power Relay (Second 'B' Series only)	N/A	42-101208-05		
16	Stk	Limit Switch - Position 1(Green)	N/A	47-23113-01		
16	Stk	Limit Switch - Position 2 (Blue)	N/A	47-23113-02		
16	Stk	Limit Switch - Position 3 (Red)	N/A	47-23113-05		
16		Limit Switch - Position 4 (Red)	N/A	N/A		
16		Limit Switch - Position 5 (Orange)	N/A	N/A		
16		Limit Switch - Position 6 (Orange)	N/A	N/A		

No.	Notes	BRAND/CATEGORY CABINET WIDTH MOTOR TYPE/SPEED VOLTAGE/HEAT COMMUNICATION	FB 17 TS ALL N	FB 21 TS ALL N	FB 24 TS ALL N	FB 25 TS ALL N
COILS						
30		Coil Assembly (includes items below)	RCHL-24A2GH17	RCHL-36A1GH21	RCHL-48A1GH24	RCHL-60A1GH24
	Stk	Flowcheck/Piston Assembly (Flowcheck Distributor & Piston)	61-26106-09	N/A	N/A	61-26110-14
G		Flowcheck Distributor Assembly	61-104236-06	61-104236-08	61-104236-10	61-104236-10
H	Stk	Piston Kit (Piston and Teflon O-Ring)	61-25414-09	61-25414-09	61-25414-12	61-25414-14
I		TFE Washer	68-25024-01	68-25024-01	68-25024-01	68-25024-01
J		Strainer	83-26020-01	83-26020-01	83-26020-01	83-26020-01
31		Thermal Expansion Valve (TXV)	61-26195-01	61-26196-02	61-26195-04	61-26196-06
		TXV Bulb Strap Kit	64-101357-01	64-101357-01	64-101357-01	64-101357-01
32		Vertical Drain Pan	68-101805-09	68-101805-07	68-101805-08	68-101805-08

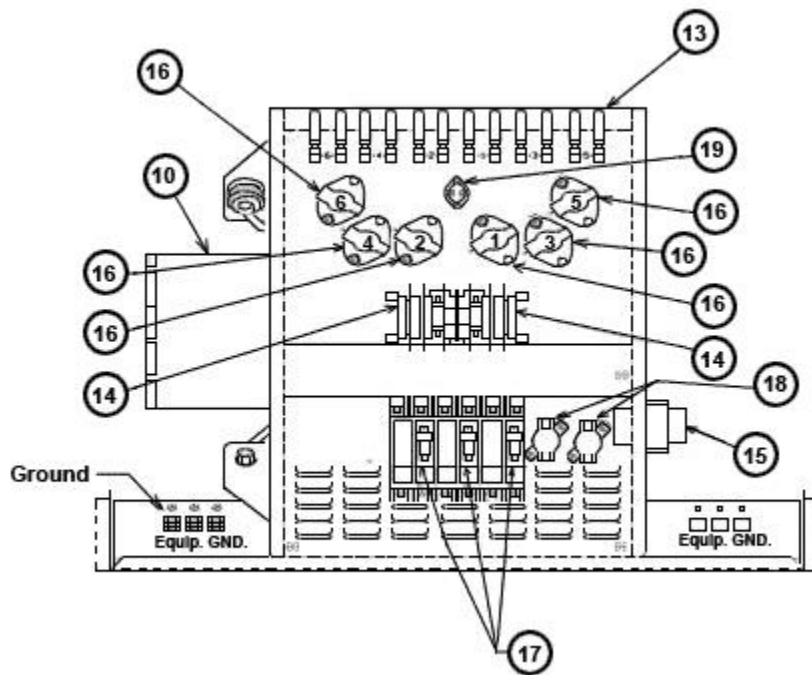
No.	Notes	BRAND/CATEGORY CABINET WIDTH MOTOR TYPE/SPEED VOLTAGE/HEAT COMMUNICATION	FB 17 TS ALL N	FB 21 TS ALL N	FB 24 TS ALL N	FB 25 TS ALL N
ACCESSORIES						
		Replacement Filters	54-23217-02	54-23217-03	54-23217-04	54-23217-04
		Finger Safe Circuit Breaker Cover - (1 for each Circuit Breaker Pole)	45-23203-01	45-23203-01	45-23203-01	45-23203-01
		Horizontal Drain Pan	RXBD-CB	RXBD-CB	RXBD-CB	RXBD-CB



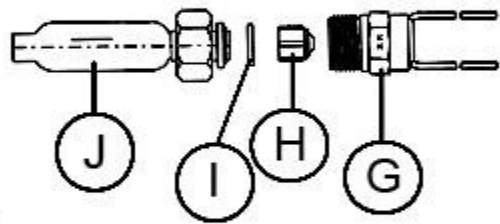
Exploded View



Door Assembly



Electrical Assembly



Flow Check Piston Assembly

NOTES

Stk It is recommended that stock be maintained for this part.
N/A Not Applicable