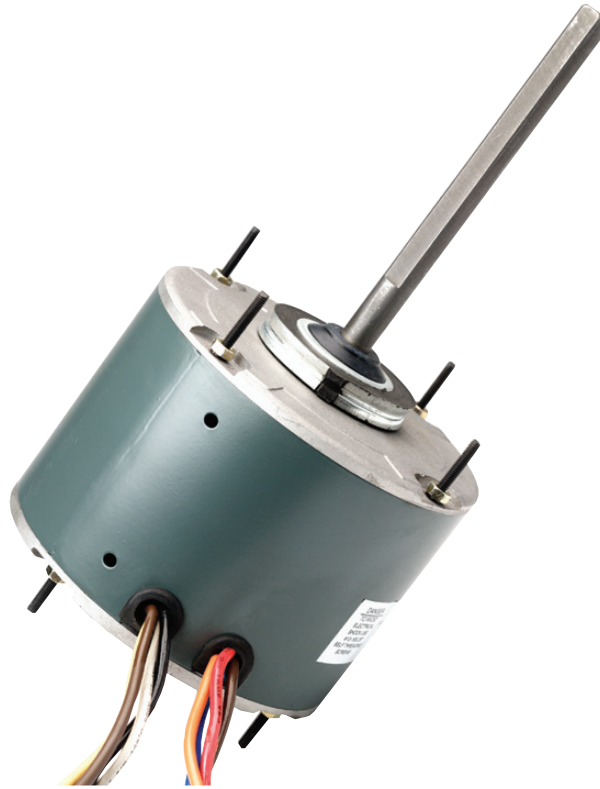




Condenser Fan Motors



Features

- Installs with all standard 48 frame mounting brackets
- Standard shaft length, diameter, and flats
- Drain holes with plugs in both end plates
- Automatic thermal overload protector
- Uses standard 370V capacitors
- UL recognized thermal protection
- Standard motor casing size
- Low power consumption
- 60 C° ambient design
- Electrically reversible
- Continuous duty air over
- Class B insulation
- Quiet operation
- Extended studs
- 30" leads
- 60Hz

Motor Cross Reference

HP	Voltage	Speed	370V Capacitor	Refricenter	Mars	Packard	Marathon	AO Smith	Fasco	Emerson
1/6	208-230	1075/1	5	FMC162	03727		X411	FSE1016S	D905	1859
1/4	208-230	1075/1	5	FMC142	03728	63128	X213	FSE1026S	D909	1860
1/3	208-230	1075/1	7.5	FMC132	03729	63129	X214	FSE1036S	D908	1861
1/2	208-230	1075/1	10	FMC122	03730	63130	X221	FSE1056S	D907	1862
3/4	208-230	1075/1	10	FMC342	03731			FSE1076S	D929	1868
1/4	208/230	825/1	7.5	FMC142-8				FSE1028S	D743	1874
1/3	208/230	825/1	10	FMC132-8				FSE1038S	D796	1875
1/6 to 1/3	208-230	1075/2	7.5/5	MMC13162				FE6000	D2827	5462
1/5 to 1/2	208-230	1075/2	12.5/10	MMC12152				FE6002		5465
1/6 to 1/3	208-230	825/2	10/7.5	MMC13162-8				FE6001	D2826	5464

* Mars, Packard, Marathon, AO Smith, Fasco, and Emerson are trademarks of their respective owners. Reasonable effort has been made to assure the accuracy of this cross-reference information. However, final evaluation for suitable replacement is left to the installer.



Condenser Fan Motors

Specifications

Part Number	HP	Volts	Amps	RPM	Capacitor Requirement	Bearing	Size "A"	Total Weight in lbs
FMC162	1/6hp	208/230V	1.30	1075/1	5uF/370V	SLEEVE	4.25"	9.46
FMC142	1/4hp	208/230V	2.20	1075/1	5uF/370V	SLEEVE	4.25"	12
FMC132	1/3hp	208/230V	2.80	1075/1	7.5uF/370V	SLEEVE	4.52"	12
FMC122	1/2hp	208/230V	4.20	1075/1	10uF/370V	SLEEVE	5.29"	16.28
FMC342	3/4hp	208/230V	4.50	1075/1	10uF/370V	SLEEVE	5.75"	22
FMC142-8	1/4hp	208/230V	1.50	825/1	7.5uF/370V	BALL	4.25"	12
FMC132-8	1/3hp	208/230V	2.20	825/1	10uF/370V	BALL	4.53"	12

Multi-Horsepower Motors

Part Number	Volts	RPM	Capacitor Requirement	(1) HP-FLA	(2) HP-FLA	(3) HP-FLA	(4) HP-FLA	Bearing	Size "A"	Total Weight in lbs
MMC13162	208/230V	1075/2	5uF/370V @ 230V 7.5uF/370V @ 208V	1/3 - 2.8	1/4 - 2.0	1/5 - 1.7	1/6 - 1.5	BALL	4.53"	13.64
MMC12152	208/230V	1075/2	10uF/370V @ 230V 12.5uF/370V @ 208V	1/2 - 3.0	1/3 - 2.5	1/4 - 2.0	1/5 - 1.3	BALL	5.32"	15.84
MMC13162-8	208/230V	825/2	7.5uF/370V @ 230V 10uF/370V @ 208V	1/3 - 1.9	1/4 - 1.7	1/5 - 1.5	1/6 - 1.2	BALL	5.32"	14.52

Mechanical Data

