

REVISIONS	BY

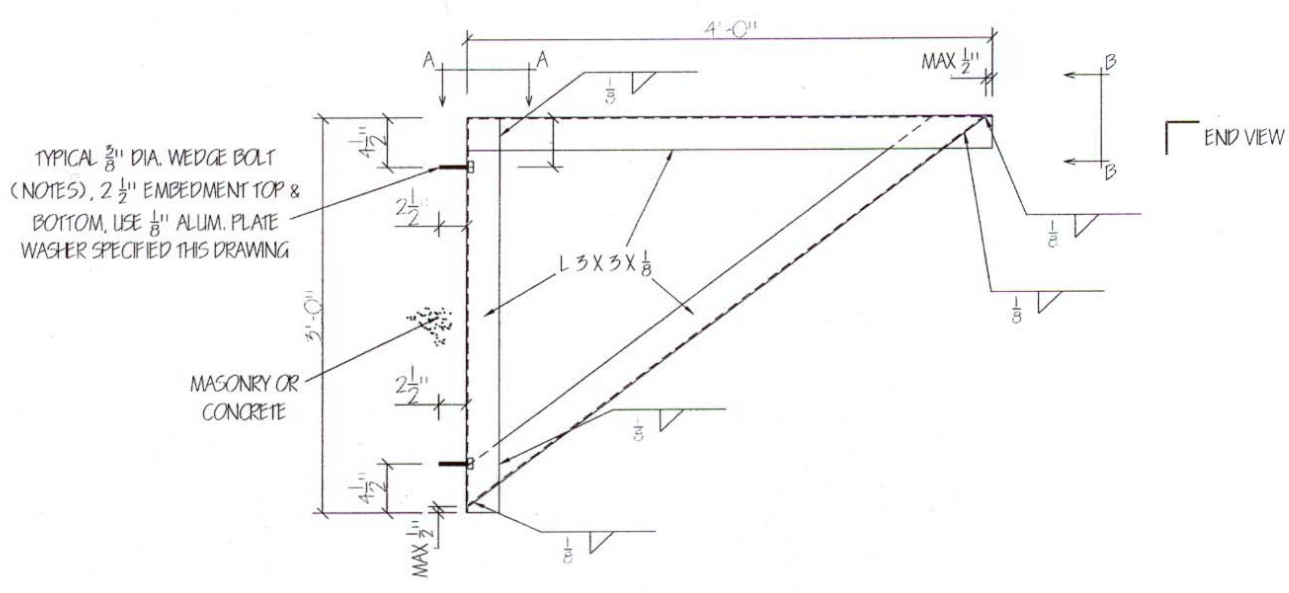


ALFREDO ARTEAGA JR. & ASSOC. INC.
ENGINEERING CONSULTANTS
33070
850 W. 68 ST. HALEAH, FLORIDA #33014
305 - 528 - 7878

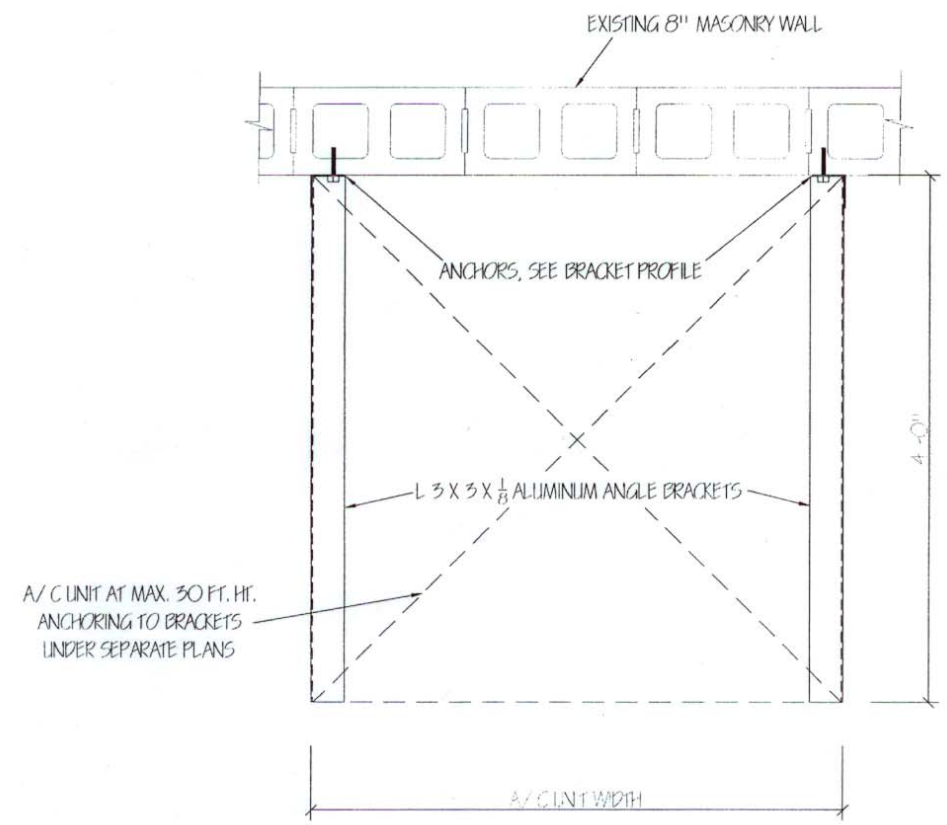
THESE DRAWINGS ARE NOT VALID UNLESS SIGNED BY THE ENGINEER AND SEALED BY A DRY SEAL. IT IS AN INFRINGEMENT OF COPYRIGHT LAW TO REPRODUCE THIS DRAWING WITHOUT THE FULL WRITTEN CONSENT OF THE ENGINEER.

A/C ALUMINUM MOUNTING BRACKETS
METALLUM ENTERPRISES, INC.
MIAMI, FLORIDA

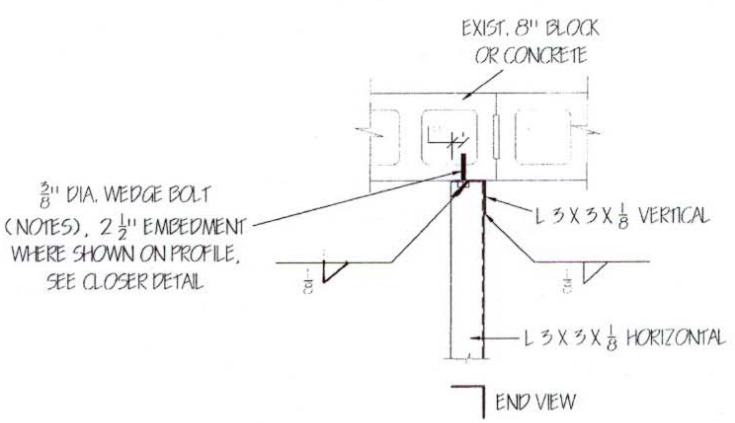
DRAWN:	A.A.A.
CHECKED:	A.A.
DATE:	6-25-08
SCALE:	AS NOTED
JOB No. :	
SHEET:	S-1
1 OF 1	



BRACKET ELEVATION
1 1/2" = 1'-0"

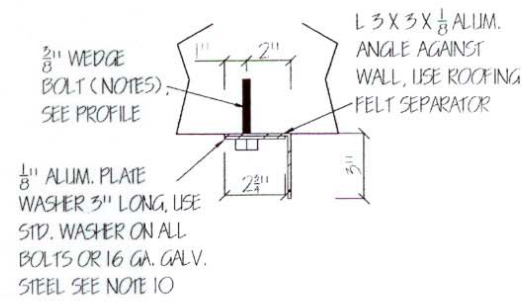


A/C UNIT SUPPORT PLAN
1 1/2" = 1'-0"

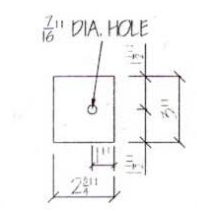


SECTION A-A
1 1/2" = 1'-0"

NOTE: WHEN USING POWERS BOLTS RECEIVING SURFACE SHALL BE CONCRETE

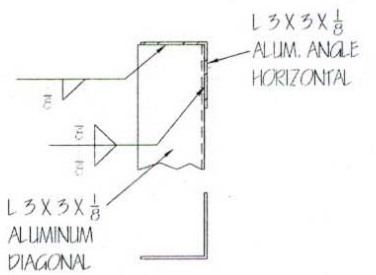


BRACKET BOLTING DETAIL
3" = 1'-0"

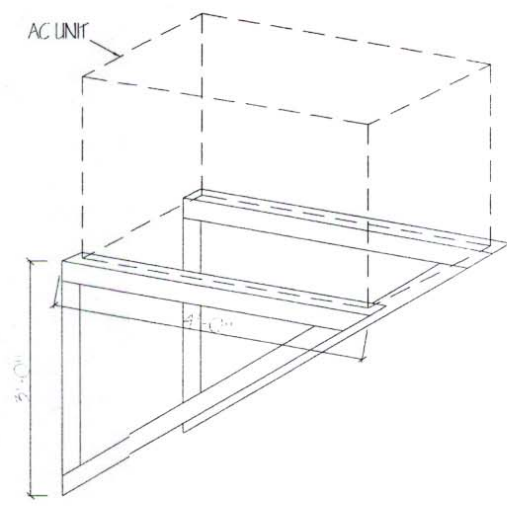


1/8" ALUMINUM PLATE WASHER
3" = 1'-0"

NOTE: 16 GA. GALV. STEEL PLATE WASHER MAY BE USED, SEE NOTE 10.



SECTION B-B
3" = 1'-0"



ISOMETRIC SKETCH
N.T.S.

GENERAL NOTES:

- 1 - DESIGN OF ALUMINUM BRACKETS WAS BASED ON A/C UNITS NO LARGER THAN 34" X 34" IN PLAN AND 50" HIGH, WEIGHING NO MORE THAN 411 POUNDS. BRACKETS MAY ALSO BE USED FOR A/C PACKAGE UNITS WEIGHING NO MORE THAN 350 POUNDS AND WITH A PLAN DIMENSION OF 49" X 35" AND A HEIGHT OF NO MORE THAN 30 1/2".
- 2 - WIND LOADING USED IS BASED ON ASCE 7-02 CHAPTER 6 FOR A WIND VELOCITY OF 146 MPH AND A MOUNTING HEIGHT NOT TO EXCEED 30 FT. TO CENTER OF UNIT.
- 3 - ALL ALUMINUM SHAPES SHALL BE 6061 T6 ALLOY, WELDING SHALL BE WITH 5556 FILLER ALLOY.
- 4 - PLATE WASHERS SHALL BE OF 3003 H16 ALUMINUM ALLOY.
- 5 - USE ONLY HILTI KWIK BOLT 3, N.O.A 06-0810.13, EXPIRES 12-28-2011 OR POWERS LOK/BOLT N.O.A 03.0311.08, EXPIRES 11-13-2008 OR POWERS WEDGE-BOLT ANCHOR N.O.A 05-0701.10 EXPIRES 5-1-2011. POWERS BOLTS MAY ONLY BE USED WHEN RECEIVING SURFACE IS CONCRETE. ALL BOLTS SHALL BE STAINLESS STEEL, EDGE DISTANCE SHALL BE A MIN. OF 1.25 TIMES THE EMBEDMENT, ALL BOLTS SHALL BE INSTALLED WITH THEIR STANDARD WASHERS.
- 6 - USE ROOFING FELT TO SEPARATE ALL ALUMINUM FROM CONCRETE OR BLOCK.
- 7 - THESE DETAILS DO NOT APPLY TO UNIT ANCHORING TO BRACKETS WHICH SHALL BE PART OF A SEPARATE SUBMITTAL.
- 8 - ALL WELDING SHALL BE PERFORMED BY CERTIFIED WELDERS.
- 9 - ALL PARTS OF THE ALUMINUM DESIGN MANUAL OF THE ALUMINUM ASSOCIATION 2005 EDITION APPLY.
- 10 - WHEN USING STEEL PLATE WASHERS, COVER CONTACT AREA BETWEEN STEEL AND ALUMINUM WITH DUCT TAPE AS SEPARATOR.